

# N E F É L

scent experience

X



MADE IN ITALY

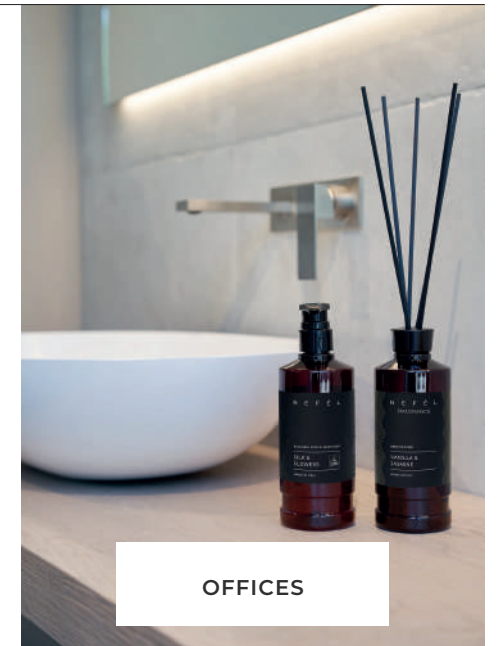
# N E F É L

## LIGHTNESS ON THE SKIN

Nefél is the line dedicated to hand, face, body and hair care and room scenting, with deodorants and fragrance reed diffusers. The name is inspired by an ancient Greek word Νεφέλη meaning 'cloud' and is intended to represent the idea of lightness, delicacy and elegance.

Each Nefél product is entirely Made in Italy, guaranteeing not only the highest quality of ingredients, but also special attention to detail, from sustainable packaging to the minimalist design of the accessories.

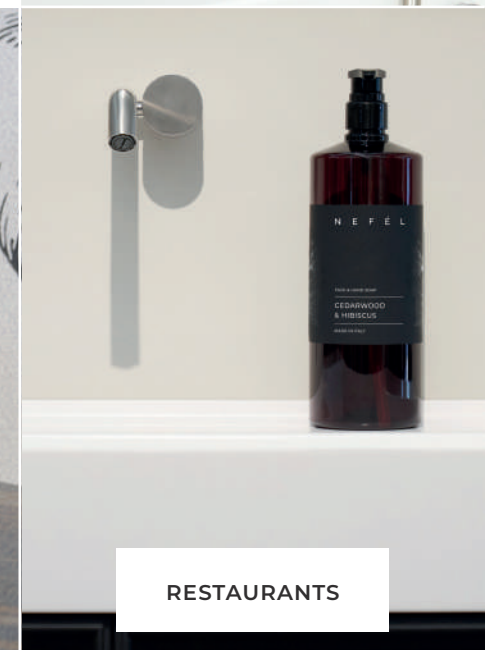
The style of the line is designed to add a touch of elegance to restaurant, hotel and office spaces, offering a refined sensory experience.



OFFICES



HOTEL



RESTAURANTS



# GREEN PHILOSOPHY

Small actions can help generate big changes. With small gestures we can change ourselves, our environment, our future. Taking care of our bodies and our well-being is one of those simple daily actions that we can and must transform into something different, conscious, sustainable.

The **Nefél refillable system** presents itself as the ideal alternative to disposable plastic. Its unique combination of **functionality, minimalist design** and the use of **100% recycled materials** not only help reduce costs in use, but above all limit the environmental impact. The use of the dispenser significantly **reduces the amount of waste** to be disposed of daily and **simplifies cleaning** compared to conventional single-dose products. A further plus is the targeted application of the product, which **avoids waste** or insufficient doses. When the bottle is empty, it can be filled quickly and easily by staff.



## ECOLABEL CERTIFIED

The Nefél line also features Ecolabel (European Eco-label) certified soaps. A further guarantee of **environmental excellence** and **high quality performance**.



## LESS PLASTIC, LESS WASTE

The packaging of Nefél products is made of **100% recycled plastic**, which is why some colour variations of the bottles are possible.



# REFILL SYSTEM

## 01.

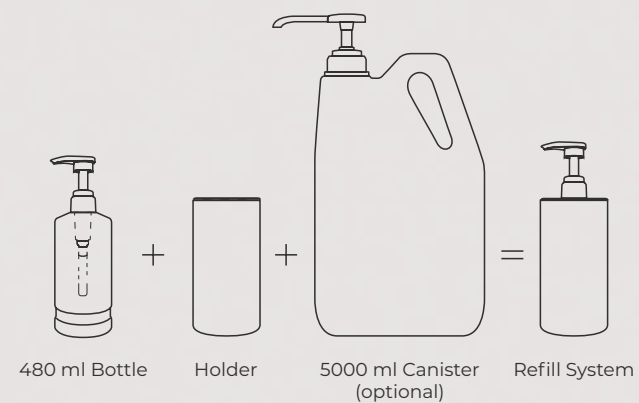
### REDUCES PLASTIC GARBAGE

It avoids the use of single-dose products and is long-lasting.

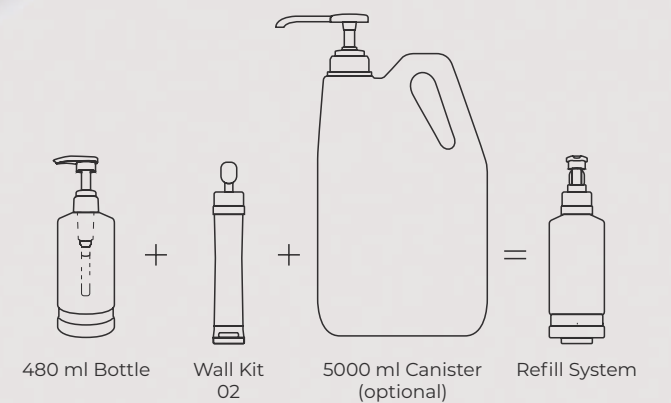
## 02.

### LIMITS PRODUCT WASTE

It dispenses the desired quantity.



### ANTI-THEFT AND ANTI-TAMPERING SYSTEM



## 03.

### LOWERS COSTS IN USE

The large size guarantees considerable savings.

## 04.

### EASY TO FILL

Easy refueling with the 5 L pump canister.

## 05.

### SPEEDS UP CLEANING

Allows scheduling of filling, without daily intervention.



# REFILL SYSTEM

## 01.

### REDUCES PLASTIC GARBAGE

It avoids the use of single-dose products and is long-lasting.

## 02.

### LIMITS PRODUCT WASTE

It dispenses the desired quantity.

ANTI-THEFT AND  
ANTI-TAMPERING SYSTEM



## 03.

### LOWERS COSTS IN USE

The large size guarantees considerable savings.

## 04.

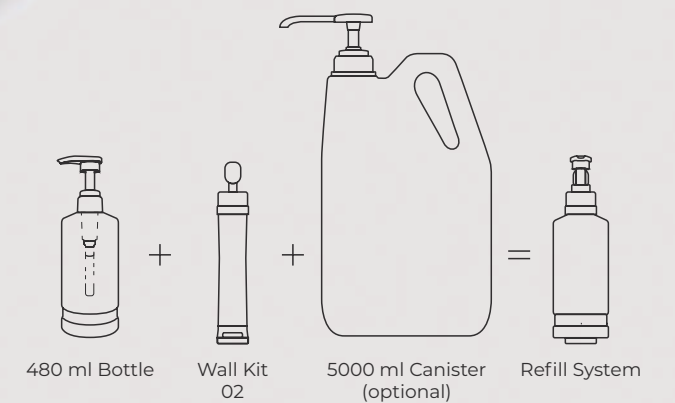
### EASY TO FILL

Easy refueling with the 5 L pump canister.

## 05.

### SPEEDS UP CLEANING

Allows scheduling of filling, without daily intervention.



# VERSATILE ELEGANCE

The fragrances of Nefél products have been created by Italian master perfumers, bringing together essences in **sophisticated combinations**. The intention is to elevate the beauty routine to a unique sensory experience. Each product is characterised by a symphony of meticulously balanced olfactory notes, which, combined with the minimalist design, embody the perfect fusion of style and hygiene, ensuring a touch of class in every bathroom, from hotels to restaurants and offices.



# DAILY WELLBEING

Nefél soaps are made only with **high-quality ingredients** to bring real benefit to the skin. Nefél represents typically Italian quality, research and attention to detail.

Daily use of these fine cosmetics, formulated with a **rich combination of moisturizing and nourishing ingredients**, gives the skin a lasting well-being, leaving it visibly radiant, velvety to the touch and enveloped in an irresistible fragrance, for a complete and satisfying treatment.



# OLFACTORY FAMILIES

## FRUITY / CITRUS FRAGRANCE FAMILY

**Olfactory notes of:** Bergamot, Lemon, Orange, Pomegranate, Grapefruit, Peach, Blackberry, Fig and Date.



## WOODY FRAGRANCE FAMILY

**Olfactory notes of:** Bark, Cedarwood, Vetiver, Bamboo, Teak Wood, Sandalwood, Tobacco Leaf, Whisky, White Pepper and Musk.



## ORIENTAL FRAGRANCE FAMILY

**Olfactory notes of:** Amber, Vanilla, Tonka Bean, Cardamom, Cinnamon, Ginger, Star Anise, Shea Butter, Almond Oil, Jojoba Oil and Patchouli



## FLORAL FRAGRANCE FAMILY

**Olfactory notes of:** Green Tea Leaves, Hibiscus, Jasmine, Lavender, Lotus, Narcissus, Peony, Red Water Lily, Rose, Vervain, Violet, Freesia, Iris, Neroli, Orange Blossom and Ylang Ylang.





N E F É L

# Face & Hand Soap

BERGAMOT & VERVAIN

CEDARWOOD & HIBISCUS

BLACK AMBER

SILK & FLOWERS

Scented liquid soap for cleaning face and hands.  
With selected ingredients, it makes the skin soft  
and velvety.



FORMULATED WITH GLYCERIN



FOR HOTELS, RESTAURANTS AND  
OFFICES



DERMATOLOGICALLY TESTED

480 ML | 1000 ML | 5000 ML







FACE &amp; HAND SOAP

## BERGAMOT & VERVAIN

MEDITERRANEAN GARDEN

A walk in the heart of Sicily, guided by the fresh and sparkling trail of Bergamot, Lemon and Orange: this is the idea behind this soap. A citrusy incipit that joins a spicy heart with the aromaticity of Cinnamon and the elegance of Verbena, sublimated by a musky woody accord.

### CITRUS FRAGRANCE FAMILY

#### BERGAMOT, LEMON AND ORANGE

A selection of Mediterranean citrus fruits, distinguished by their typical fragrance enhanced by a balsamic sweetness.

#### VERVAIN, CINNAMON, CARDAMOM

Precious oriental spices combined with sophisticated floral nuances add a balanced aromaticity to the fragrance.

#### MUSK AND VETIVER

Deep, enveloping essences characterized by earthy scents with woody accents complete the aromatic bouquet.



FACE &amp; HAND SOAP

## CEDARWOOD & HIBISCUS

DEEP FOREST

The union of a precious wood and a seductive flower creates a soap with an intense, enveloping scent. Gourmand notes of Vanilla and Ylang Ylang balance the ensemble for a sophisticated blend that delivers a fresh clean feel. Its robust, earthy fragrance transports the mind to a lush forest.

### WOODY FRAGRANCE FAMILY

#### CEDARWOOD AND BAMBOO

A fine collection of noble essences with an enveloping aroma for timeless elegance.

#### HIBISCUS AND YLANG YLANG

A sophisticated composition of oriental flowers, where delicacy and intensity come together.

#### VANILLA AND CASHMERAN

Warm, soft aromas lend an exotic touch to the fragrance.





FACE &amp; HAND SOAP

## BLACK AMBER

### ORIENTAL ALCHEMY

A warm, talcum and intense note, reminiscent of the luxurious fragrances of yesteryear: the sophisticated sensuality of Amber and the essence of Teak Wood harmonise the entire fragrance and give a soap with a slightly smoky scent that recreates typical oriental atmospheres. A peculiar combination that surprises.

### ORIENTAL FRAGRANCE FAMILY

#### AMBER, CARDAMOM AND TONKA BEAN

Revitalising and gently pungent, these ingredients lend character to the fragrance.

#### TEAK WOOD AND VETIVER

Resinous depth and slightly smoky undertones are balanced to give warmth and persistence.

#### ROSEMARY AND SAGE

Aromatic herbs that combine the characteristic fragrance with a refreshing effect.



ECOLABEL FACE &amp; HAND SOAP

## SILK & FLOWERS

### GREEN AWAKENING

An Ecolabel delicately perfumed soap, whose moisturising and emollient properties give the skin immediate softness. The floral aroma, given by Rose Petals and Lavender, slowly gives way to a warmer, full-bodied scent, thanks to Vanilla and Sandalwood.

### FLORAL FRAGRANCE FAMILY

#### ROSE, LAVENDER AND VIOLET

A noble bouquet composed in perfect balance, enhancing the delicacy of each petal.

#### HELIOTROPE AND YLANG YLANG

A sweet floral accord that irresistibly envelops the senses.

#### VANILLA AND SANDALWOOD

Delicate sweetness combined with a warm woody aroma for perfect harmony.



N E F É L

# Hair & Body Wash

BERGAMOT & VERVAIN

CEDARWOOD & HIBISCUS

BLACK AMBER

SILK & FLOWERS

2-in-1 product for hair and body. Gently cleanses without drying out the skin and effectively washes the hair without irritating the scalp. Enriched with vitamin E.



WITH GLYCERIN AND VITAMIN E



DERMATOLOGICALLY TESTED



DELICATE FORMULATION ON  
HAIR AND BODY

480 ML | 5000 ML







HAIR &amp; BODY WASH

## BERGAMOT & VERVAIN

MEDITERRANEAN GARDEN

In this hair and body wash, the citrus notes of Lemon, Orange and Bergamot combine with the delicately floral notes of Verbena to then meet the spicy ones of Cinnamon and Cardamom. In addition to offering a fresh, sparkling scent, it deeply cleanses, moisturises and softens the skin.

### CITRUS FRAGRANCE FAMILY

#### BERGAMOT, LEMON AND ORANGE

A selection of Mediterranean citrus fruits, distinguished by their typical fragrance enhanced by a balsamic sweetness.

#### VERVAIN, CINNAMON, CARDAMOM

Precious oriental spices combined with sophisticated floral nuances add a balanced aromaticity to the fragrance.

#### MUSK AND VETIVER

Deep, enveloping essences characterized by earthy scents with woody accents complete the aromatic bouquet.



HAIR &amp; BODY WASH

## CEDARWOOD & HIBISCUS

DEEP FOREST

Thanks to the energising accord of Sea Breeze and Hibiscus, the floral notes of Ylang Ylang and the reassuring notes of Cedarwood, this hair and body wash gently cleanses the skin and energises body and mind. Its captivating fragrance will be a pleasant discovery.

### WOODY FRAGRANCE FAMILY

#### CEDARWOOD AND BAMBOO

A fine collection of noble essences with an enveloping aroma for timeless elegance.

#### HIBISCUS AND YLANG YLANG

A sophisticated composition of oriental flowers, where delicacy and intensity come together.

#### VANILLA AND CASHMERAN

Warm, soft aromas lend an exotic touch to the fragrance.

HAIR &amp; BODY WASH

## BLACK AMBER

### ORIENTAL ALCHEMY

An intense and evocative hair and body wash, characterised by the warm, oriental notes of Amber and the soft scents of precious Teak Wood. It revitalises and refreshes the whole body for an incredible sensation of immediate well-being and harmony.



### ORIENTAL FRAGRANCE FAMILY

#### AMBER, CARDAMOM AND TONKA BEAN

Revitalising and gently pungent, these ingredients lend character to the fragrance.

#### TEAK WOOD AND VETIVER

Resinous depth and slightly smoky undertones are balanced to give warmth and persistence.

#### ROSEMARY AND SAGE

Aromatic herbs that combine the characteristic fragrance with a refreshing effect.



ECOLABEL SHOWER GEL

## SILK & FLOWERS

### GREEN AWAKENING

Ecolabel-certified and dermatologically tested shower gel, particularly suitable for sensitive skin. The pleasant floral fragrance, gives an immediate sensation of freshness. Enriched with silk proteins and glycerine, it has a moisturising action on the skin.



### FLORAL FRAGRANCE FAMILY

#### ROSE, LAVENDER AND VIOLET

A noble bouquet composed in perfect balance, enhancing the delicacy of each petal.

#### HELIOTROPE AND YLANG YLANG

A sweet floral accord that irresistibly envelops the senses.

#### VANILLA AND SANDALWOOD

Delicate sweetness combined with a warm woody aroma for perfect harmony.



# Hair Conditioner

## GREEN TEA LEAVES

Detangling & hydrating hair conditioner. An indispensable ally for nourishing, revitalising and giving new structure to the hair after cleansing.



FOR ALL HAIR TYPES



REHYDRATES AND REPAIRS



DELICATELY SCENTED

480 ML



HAIR CONDITIONER

## GREEN TEA LEAVES

SILK & SMOOTH

Designed to repair and protect damaged hair, giving it new vitality, this light-weight conditioner is perfect for all hair types, ensuring a natural shine that lasts all day. Contains ingredients of organic origin.

### FLORAL FRAGRANCE FAMILY

#### GREEN TEA LEAVES, CHAMOMILE AND ROSEMARY

Soothing and revitalising extracts give shine without weighing hair down.

#### PEPPERMINT AND LEMON

For an immediate feeling of cleanliness, strenght and lightness.

#### SHEA BUTTER AND JOJOBA OIL

Nourishing and elasticizing, these ingredients are a boon to healthy hair.

N E F É L

# Hand & Body Lotion

## LOTUS & VIOLET

Moisturizing and nourishing cream for body and hands, enriched with hyaluronic acid. Its fresh, light texture results in rapid absorption for an immediate feeling of comfort.



FORMULATED WITH HYALURONIC  
ACID AND VITAMIN E



FOR ALL SKIN TYPES



DERMATOLOGICALLY TESTED

480 ML



HAND & BODY LOTION

## LOTUS & VIOLET

### DAILY CUDDLE

A cream that nourishes the skin, leaving it silky and irresistibly soft. Selected ingredients provide instant hydration and the addition of Vitamin E has an important antioxidant effect. The light fragrance adds a touch of well-being to every application.

### FLORAL FRAGRANCE FAMILY

#### LOTUS AND VIOLET

They help nourish the skin, leaving it velvety and enveloped in a delicate fragrance.

#### JOJOBA OIL AND ALMOND OIL

They improve skin elasticity and, due to their soothing properties, are also ideal for sensitive skin.

#### GORSE AND SUNFLOWER SEED

Moisturize and protect the skin, restoring freshness and vitality.



# Scent

## Concentrated Deodorant

- MEDITERRANEAN FRUITS
- BARK & WHITE PEPPER
- BLACKBERRY & PEONY
- RED WATER LILY

Concentrated deodorant used to add perfume to environments, surfaces and fabrics. It can also be used on carpets and rugs.



PLEASANTLY SCENTED



IT LASTS A LONG TIME



NO ARTIFICIAL COLOURS

480 ML







SCENT  
CONCENTRATED DEODORANT

## MEDITERRANEAN FRUITS

### MEDITERRANEAN DREAM

A fragrance that evokes the vibrant energy of the Mediterranean. Lemon and Orange release liveliness, while Juniper and Ginger add a spicy touch. Myrtle intertwines with the balsamic aroma of Eucalyptus and the delicacy of Rose, giving a floral and fresh depth reminiscent of the sea breeze.

### CITRUS FRAGRANCE FAMILY

#### LEMON AND ORANGE

A burst of energy inspired by the iconic citrus fruits of the Mediterranean, they bring a lively and sunny aroma.

#### JUNIPER BERRIES AND MYRTLE

Balsamic notes recalling coastal nature, adding intensity to the whole.

#### JASMINE AND ROSE

Delicate and balancing, they help create a welcoming and soothing environment.



SCENT  
CONCENTRATED DEODORANT

## BARK & WHITE PEPPER

### ORIENTAL MAGIC

A composition with an exuberant spicy character, which opens with the sparkling note of White Pepper enhanced by Lemon and Thyme. In the heart, Nutmeg and Black Pepper mingle with Spruce and Patchouli. The base is dominated by the notes of Cedarwood and Vetiver.

### WOODY FRAGRANCE FAMILY

#### WHITE PEPPER AND THYME

Together, they create an energizing atmosphere, ideal for refreshing rooms.

#### BARK AND FIR

A union of warmth and vitality, they give a sense of regeneration and tranquility in spaces.

#### PATCHOULI AND VETIVER

Relaxing and earthy, these notes promote balance and calm.



SCENT  
CONCENTRATED DEODORANT

## BLACKBERRY & PEONY

### FRUITY ACCORD

A delicious explosion of aromas, resulting from the meeting of the juicy sweetness of Fig and Peach with the vibrant flavour of Blackcurrant and Grapefruit. The elegance of Peony and Damask Rose combines with Lily of the Valley and Freesia, offering a refined floral composition.

### FRUITY FRAGRANCE FAMILY

#### BLACKBERRY AND FIG

Refreshing and lively, for a pleasantly scented environment.

#### PEONY AND FREESIA

Elegant and delicate, they give a light and harmonious fragrance.

#### GRAPEFRUIT AND CEDARWOOD

Hints of citrus, balanced by warm woody notes, infusing energy and vitality.



SCENT  
CONCENTRATED DEODORANT

## RED WATER LILY

### FLORAL ENCHANTMENT

An intriguing olfactory journey that opens with the delicacy of Red Water Lily, combined with the citrus scent of Bergamot and Sweet Orange. In the heart, Jasmine and Ylang Ylang blend with the refinement of Iris. Finally, to end on a sweet note, Vanilla and Tonka Bean.

### FLORAL FRAGRANCE FAMILY

#### RED WATER LILY AND YLANG YLANG

Their softening properties help create a sense of serenity.

#### BERGAMOT AND SWEET ORANGE

Sunny, rejuvenating citrus fruits that spread energy and positivity.

#### IRIS AND ORANGE BLOSSOM

Elegant and delicate, they release a harmonious fragrance for a pleasant feeling of well-being.



N E F É L

# Aquazero

## Air Freshener Without

BERGAMOT & VETIVER

WOOD & CINNAMON

GRAPEFRUIT & LAVENDER

WHITE NARCISSUS

Concentrated deodorant without water for a long-lasting scent of environments and surfaces.



INTENSELY SCENTED



DOES NOT WET SURFACES



NO WATER AND ARTIFICIAL COLOURS

480 ML





AQUAZERO  
AIR FRESHENER WITHOUT WATER

## BERGAMOT & VETIVER

### SPARKLING CHEMISTRY

A play of contrasts, given by the union of Bergamot and Sichuan Pepper, creating a distinctive fragrance. The olfactory journey continues with Vetiver, Lavender, Geranium and Pink Pepper, offering a refined blend of spices and flowers. At the end, a base of Amber and Labdanum provide an aromatic touch.

### CITRUS FRAGRANCE FAMILY

#### BERGAMOT AND LAVENDER

The combination of citrus and aromatic notes promotes a regenerating effect.

#### VETIVER AND AMBER

Intense and enveloping, they combine woody tones and warm nuances, lending depth and character.

#### PEPPER AND LABDANUM

Strong and refined, they combine spicy and resinous tones, lending warmth and personality to the fragrance.



AQUAZERO  
AIR FRESHENER WITHOUT WATER

## WOOD & CINNAMON

### SUBLIME WOOD

The first scent is lively and fresh, thanks to notes of Lemon, Mandarin, Sage and Basil. The fragrance evolves into a floral and spicy symphony, with Geranium, Ylang Ylang, Cinnamon and Clove creating a rich and enveloping combination. To close, a warm and deep aroma, with Cedarwood and Vetiver.

### WOODY FRAGRANCE FAMILY

#### CEDARWOOD AND VETIVER

Robust and sophisticated, they combine woody and earthy notes that convey harmony and stability.

#### CINNAMON AND CLOVES

A warm, spicy accent that releases an intense, enveloping aroma.

#### LEMON AND TANGERINE

Lively and sparkling, they encapsulate all the freshness of Mediterranean citrus fruits, bringing a burst of energy.





AQUAZERO  
AIR FRESHENER WITHOUT WATER

## GRAPEFRUIT & LAVENDER

### PRECIOUS NECTAR

A sweet and sunny fragrance whose unmistakable fruity notes of Grapefruit, Lemon and Melon, dive into marine scents wrapped in the delicacy of Lilac and the aromaticity of Lavender. The musky base notes leave a soft and persistent trail that envelops the senses in an elegant and so-phisticated embrace.

### FRUITY FRAGRANCE FAMILY

#### GRAPEFRUIT AND MELON

A fruity and fresh mix, where sweetness and acidity balance each other in a refined equilibrium.

#### LAVENDER AND LILAC

Clear and intoxicating notes that create a delicate and relaxing fragrance.

#### MUSK AND SEA SALT

A combination of freshness and intensity reminiscent of salty air and unspoilt nature.



AQUAZERO  
AIR FRESHENER WITHOUT WATER

## WHITE NARCISSUS

### FLORAL HARMONY

A delicate fragrance enhanced by a bouquet of white flowers such as Narcissus, Orange Blossom and Osmanthus. Contributing to the creation of a refined balance are the elegance of Rose, the intensity of Amber and the aroma of Musk. The essence is completed with the warm notes of Vetiver, Cedarwood and Vanilla.

### FLORAL FRAGRANCE FAMILY

#### NARCISSUS, OSMANTHUS AND ROSE

A refined and cosy atmosphere enhanced by a bouquet of fresh flowers.

#### BERGAMOT AND PEACH

A fruity and lively encounter that combines sweetness and freshness, infusing energy and lightness.

#### VANILLA AND PATCHOULI

Warm and intense aromas that reveal a delicious exotic accord.



# Fragrance

## Reed diffuser

DATE & POMEGRANATE

TOBACCO & WHISKY

DRAGON FRUIT & TONKA BEAN

VANILLA & JASMINE

The perfume sticks allow the gradual diffusion of the fragrance, ensuring a delicate but persistent scent.



INTENSELY SCENTED



IDEAL FOR HOTELS,  
RESTAURANTS, B&Bs AND SPA



LASTS UP TO 3 MONTHS

480 ML







FRAGRANCE  
REED DIFFUSER

## DATE & POMEGRANATE

ZEN INFUSION

A diffuser that captures the enveloping warmth of the amber family: Bitter Orange and Pomegranate blend with the balsamic touch of Anise and Eucalyptus, while the sweetness of Date unites with the oriental notes of Ylang Ylang and Bulgarian Rose. The base of Cedar, Patchouli and Vanilla leaves an intense trail in the air.

### ORIENTAL FRAGRANCE FAMILY

#### DATE, POMEGRANATE AND ORANGE

An explosion of juicy notes that mix sweetness and freshness, creating a fragrance that brightens the room.

#### YLANG YLANG AND ROSE

Floral harmony that blends exotic, enveloping intensity with elegant, fresh delicacy.

#### EUCALYPTUS AND STAR ANISE

A stimulating contrast that renews the air, between balsamic freshness and distinct aromaticity.



FRAGRANCE  
REED DIFFUSER

## TOBACCO & WHISKY

VINTAGE PLEASURE

The woody signature is instantly recognisable and has a lot of personality, thanks to the spicy notes of Incense, Black Pepper, Cinnamon and Cardamom. The result is an energetic aroma, enriched by the essence of Ginger that combines with the iconic scents of Tobacco and Whisky in an elegant and timeless fragrance.

### WOODY FRAGRANCE FAMILY

#### TOBACCO LEAF AND INCENSE

Gently smoky notes that create the perfect base for a deep and surprising fragrance.

#### WHISKY AND TONKA BEAN

Bold and enveloping, the ingredients blend into a rich and sophisticated creation.

#### CINNAMON AND GINGER

An intense and lively pairing that mixes warmth and spiciness, creating an invigorating fragrance.



FRAGRANCE  
REED DIFFUSER

## DRAGON FRUIT & TONKA BEAN

### EXOTIC CHARM

A fragrance that enhances the sweetness of Dragon Fruit and Tonka Bean, balanced by the acidity of Orange and Bergamot. Apple Blossom and Neroli add delicacy, while Jasmine and Rose intertwine with Vanilla and Sandalwood to leave an elegant and delicately persistent echo in the air.

### FRUITY FRAGRANCE FAMILY

#### DRAGON FRUIT, BERGAMOT AND PEACH

Their properties infuse energy and lightness, transforming the environment into a dynamic and pleasant space.

#### VANILLA AND TONKA BEAN

Sweetness blends with spicy depth for a cosy and sophisticated atmosphere.

#### ROSE AND JASMINE

Elegant and refined, they waft through the air with their delicate yet pleasantly persistent notes.



FRAGRANCE  
REED DIFFUSER

## VANILLA & JASMINE

### FLORAL SYMPHONY

A radiant combination of white flowers, featuring Jasmine, Ylang Ylang, and Neroli, harmonizing with the bold tones of Amber and the citrus ones of Bergamot. All of this is highlighted by the unmistakable aroma of Vanilla, which infuses the fragrance with a pleasant sweet note without being cloying.

### FLORAL FRAGRANCE FAMILY

#### JASMINE, YLANG YLANG AND NEROLI

A sophisticated combination that exudes elegance and delicacy.

#### VANILLA AND AMBER

Warm accords that contribute to a cozy and charming atmosphere.

#### BERGAMOT AND ORANGE

The lively citrus notes stimulate a feeling of energy and positivity.



# Accessories

SET ZERO GRAVITY

WALL KIT

HOLDER

HYGIENE GUARANTY TAG

PLEXIGLASS STAND

PUMP 30

Maximum sustainability and minimum waste are the key concepts from which these accessories were developed to become true design objects.



REFILL SYSTEM



EASY INSTALLATION



MINIMAL DESIGN





## SET ZERO GRAVITY

### STYLE AND PRACTICALITY

A solid, durable wall bracket on which to place the elegant bottle holder glass, which appears to float in the air. Set consisting of stainless steel wall bracket, 100% recycled polypropylene bottle holder cup, fixing kit. Double-sided adhesive tape is also provided for wall mounting without drilling holes. The bottle holder glass can also be placed on the washbasin top.

### HOLDER WALL SOLUTION

When installed on the wall bracket, the bottles appear to be suspended in mid-air.



## HOLDER

### ELEGANT DESIGN

Made of 100% recycled anti-fingerprint textured polypropylene, this accessory can be used either free-standing, above the sink, or installed on the wall bracket in hotel, restaurant and office bathrooms. The soft touch front label can be customized as needed. The use of the bottle cup minimizes the production of waste to be disposed of and facilitates cleaning operations.

### HOLDER STANDING SOLUTION

Placed on a countertop, the Holders are an elegant addition to the bathroom.





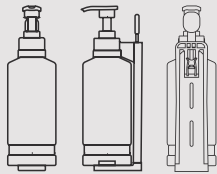
# WALL KIT

## QUALITY SUPPORT

A perfect blend of style and practicality, this accessory made of high-quality steel is a refined addition to the bathroom. The minimalist design makes the wall bracket virtually invisible when the Nefél bottle holder glass is placed, so it appears to be suspended in mid-air. The smooth, stainless surface makes the bracket easy to clean and guarantees a long service life.



TUTORIAL  
Installation instructions



Anti-theft and anti-  
tampering system



# WALL KIT 02

## QUALITY SUPPORT

This elegant matt black accessory combines style and functionality, making it a sophisticated addition to the bathroom. Thanks to its minimalist design, the wall bracket becomes almost imperceptible, leaving the Nefél bottle seemingly suspended in the air. The wall bracket is equipped with a special **anti-theft** and **tamper resistant lock**, which can only be unlocked with the supplied key.



TUTORIAL  
Installation instructions



## HYGIENE GUARANTY TAG

A FSC certified paper disc to be fixed on the bottle holder glass after cleaning ensures proper hygiene for the customer and increases the level of loyalty, as it gives the guest confidence in the cleanliness of the bathroom. It is possible to personalize the seal with the brand name.



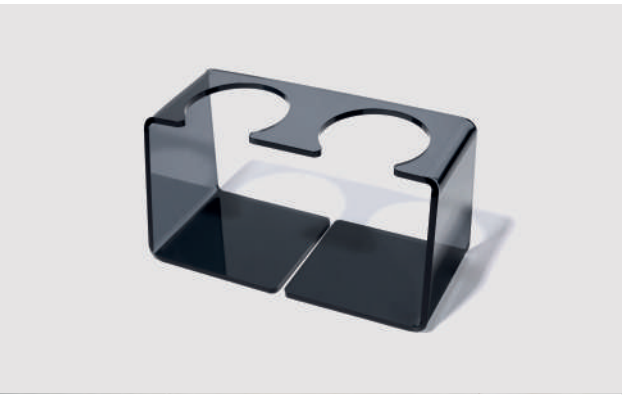
## PUMP 30

30 ml dispenser with cap for attachment to 5 L canister for refilling bottles. Pieces per box: 10.



## PLEXIGLASS STAND 01

Practical and elegant plexiglass stand ideal for accommodating two Holder with dispenser (e.g. Face & Hand Soap and Hand & Body Lotion). Available in black.



## PLEXIGLASS STAND 02

Practical and elegant plexiglass stand ideal for accommodating a 480 ml bottle and a 1000 ml bottle. Available in black.



## PLEXIGLASS STAND 03

Practical and elegant plexiglass stand ideal for accommodating two 480 ml bottles. Available in black.





# Customized Products

## CUSTOMIZED LABEL

### FOR HOLDER

Labels with detailed printing and durable adhesive. Made of soft touch material, a thin velvety layer that embellishes the packaging, ideal for affixing one's logo and showcasing branding in a sophisticated way.



## CUSTOMIZED TAG

It is possible to personalize the FSC certified paper disc to be fixed on the bottle holder glass with the brand name. It ensures proper hygiene for the customer and increases the level of loyalty, as it gives the guest confidence in the cleanliness of the bathroom.



# Articles

## Beauty line



#	PRODUCT	SIZE	QUANTITY *	CODE
01.	Nefél Bergamot & Vervain Face & Hand Soap	480 ML / 16,23 FL. OZ.	6 - 25 - 150	8007134993231
02.	Nefél Bergamot & Vervain Face & Hand Soap	1000 ML / 33,81 FL. OZ.	12 - 9 - 45	8007134993224
03.	Nefél Bergamot & Vervain Face & Hand Soap	5000 ML / 169,07 FL. OZ.	4 - 9 - 36	8007134993217
04.	Nefél Cedarwood & Hibiscus Face & Hand Soap	480 ML / 16,23 FL. OZ.	6 - 25 - 150	8007134993286
05.	Nefél Cedarwood & Hibiscus Face & Hand Soap	1000 ML / 33,81 FL. OZ.	12 - 9 - 45	8007134993279
06.	Nefél Cedarwood & Hibiscus Face & Hand Soap	5000 ML / 169,07 FL. OZ.	4 - 9 - 36	8007134993262
07.	Nefél Black Amber Face & Hand Soap	480 ML / 16,23 FL. OZ.	6 - 25 - 150	8007134993194
08.	Nefél Black Amber Face & Hand Soap	1000 ML / 33,81 FL. OZ.	12 - 9 - 45	8007134993187
09.	Nefél Black Amber Face & Hand Soap	5000 ML / 169,07 FL. OZ.	4 - 9 - 36	8007134993170
10.	Nefél Silk & Flowers Ecolabel Face & Hand Soap	480 ML / 16,23 FL. OZ.	6 - 25 - 150	8007134993361
11.	Nefél Silk & Flowers Ecolabel Face & Hand Soap	5000 ML / 169,07 FL. OZ.	4 - 9 - 36	8007134993330

\* Pcs. per box - Bxs. per layer - Bxs. per pallet



#	PRODUCT	SIZE	QUANTITY *	CODE
12.	Nefél Bergamot & Vervain Hair & Body Wash - Tester	50 ML / 1,69 FL. OZ.	12	8007134993095
13.	Nefél Bergamot & Vervain Hair & Body Wash	480 ML / 16,23 FL. OZ.	6 - 25 - 150	8007134993088
14.	Nefél Bergamot & Vervain Hair & Body Wash	5000 ML / 169,07 FL. OZ.	4 - 9 - 36	8007134993071
15.	Nefél Cedarwood & Hibiscus Hair & Body Wash - Tester	50 ML / 1,69 FL. OZ.	12	8007134993156
16.	Nefél Cedarwood & Hibiscus Hair & Body Wash	480 ML / 16,23 FL. OZ.	6 - 25 - 150	8007134993149
17.	Nefél Cedarwood & Hibiscus Hair & Body Wash	5000 ML / 169,07 FL. OZ.	4 - 9 - 36	8007134993132
18.	Nefél Black Amber Hair & Body Wash - Tester	50 ML / 1,69 FL. OZ.	12	8007134993125
19.	Nefél Black Amber Hair & Body Wash	480 ML / 16,23 FL. OZ.	6 - 25 - 150	8007134993118
20.	Nefél Black Amber Hair & Body Wash	5000 ML / 169,07 FL. OZ.	4 - 9 - 36	8007134993101
21.	Nefél Silk & Flowers Ecolabel Shower Gel - Tester	50 ML / 1,69 FL. OZ.	12	8007134993064
22.	Nefél Silk & Flowers Ecolabel Shower Gel	480 ML / 16,23 FL. OZ.	6 - 25 - 150	8007134993323
23.	Nefél Silk & Flowers Ecolabel Shower Gel	5000 ML / 169,07 FL. OZ.	4 - 9 - 36	8007134993293
24.	Nefél Green Tea Leaves Hair Conditioner - Tester	50 ML / 1,69 FL. OZ.	12	8007134993057
25.	Nefél Green Tea Leaves Hair Conditioner	480 ML / 16,23 FL. OZ.	6 - 25 - 150	8007134993040
26.	Nefél Lotus & Violet Hand & Body Lotion - Tester	50 ML / 1,69 FL. OZ.	12	8007134993033
27.	Nefél Lotus & Violet Hand & Body Lotion	480 ML / 16,23 FL. OZ.	6 - 25 - 150	8007134993026

\* Pcs. per box - Bxs. per layer - Bxs. per pallet



# Articles

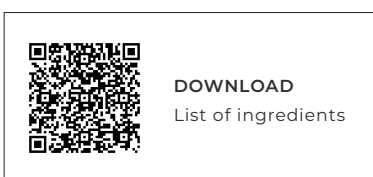
## Perfume line



#	PRODUCT	SIZE	QUANTITY *	CODE
01.	Nefél Scent Mediterranean Fruits Concentrated Deodorant	480 ML / 16,23 FL. OZ.	6 - 25 - 150	8007134992722
02.	Nefél Scent Bark & White Pepper Concentrated Deodorant	480 ML / 16,23 FL. OZ.	6 - 25 - 150	8007134992708
03.	Nefél Scent Blackberry & Peony Concentrated Deodorant	480 ML / 16,23 FL. OZ.	6 - 25 - 150	8007134992739
04.	Nefél Scent Red Water Lily Concentrated Deodorant	480 ML / 16,23 FL. OZ.	6 - 25 - 150	8007134992715
05.	Nefél Aquazero Bergamot & Vetiver Air Freshener Without Water	480 ML / 16,23 FL. OZ.	6 - 25 - 150	8007134992685
06.	Nefél Aquazero Wood & Cinnamon Air Freshener Without Water	480 ML / 16,23 FL. OZ.	6 - 25 - 150	8007134992654
07.	Nefél Aquazero Grapefruit & Lavender Air Freshener Without Water	480 ML / 16,23 FL. OZ.	6 - 25 - 150	8007134992678
08.	Nefél Aquazero White Narcissus Air Freshener Without Water	480 ML / 16,23 FL. OZ.	6 - 25 - 150	8007134992661
09.	Nefél Fragrance Date & Pomegranate Reed Diffuser	480 ML / 16,23 FL. OZ.	6 - 19 - 57	8007134992586
10.	Nefél Fragrance Tobacco & Whisky Reed Diffuser	480 ML / 16,23 FL. OZ.	6 - 19 - 57	8007134992579
11.	Nefél Fragrance Dragon Fruit & Tonka Bean Reed Diffuser	480 ML / 16,23 FL. OZ.	6 - 19 - 57	8007134992562
12.	Nefél Fragrance Vanilla & Jasmine Reed Diffuser	480 ML / 16,23 FL. OZ.	6 - 19 - 57	8007134992555

\* Pcs. per box - Bxs. per layer - Bxs. per pallet

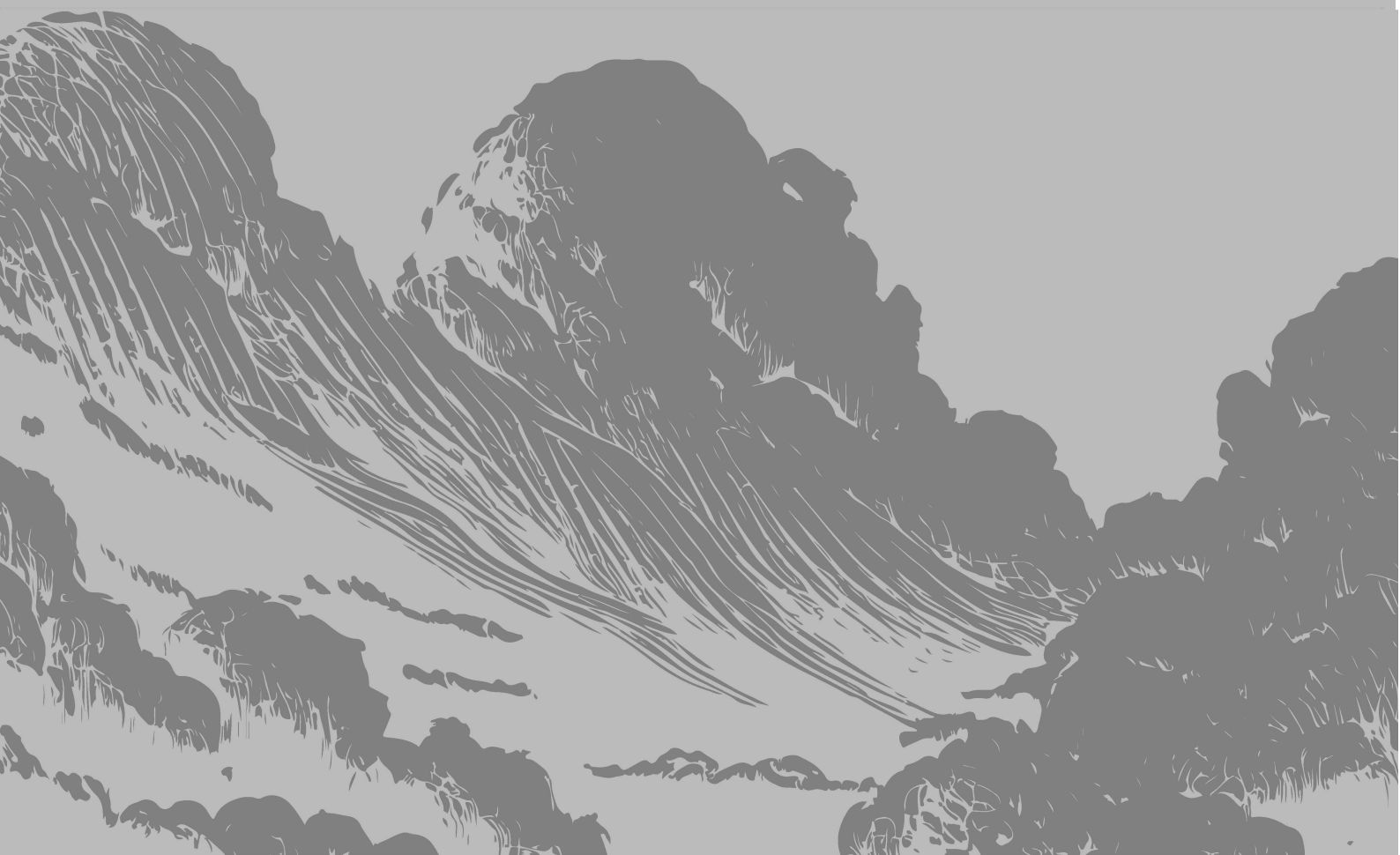




Interchem Italia Srl reserves the right to introduce modifications to the product specifications in order to improve their use at any time and without advance notice. The photographs and descriptions on our website and in our catalogue or any other marketing publication are indicative and have no contractual value.

---





**KARAN & DELFIN d.o.o.**

Topniška ulica 35e, 1000 Ljubljana, Slovenija

Tel: 080 17 88

[www.karandelfin.si](http://www.karandelfin.si) - [info@karandelfin.si](mailto:info@karandelfin.si)