

# Hygiene



## WHAT WE DO

Hygiene and Lockers from basic to customized products.  
We respond to your specific requests by manufacturing products created just for you.



## WHERE WE ARE

Our company Head Quarters is in Switzerland.  
From our offices we support our clients and work with our suppliers.

Our warehouses are strategically positioned in Germany for our lockers,  
and in Italy for all Hygiene products.  
This allows us a short lead time anywhere in Europe and the rest of the world.



## OUR MISSION



We believe in an accessible hygiene in the world of services for all the people and companies.

We apply our commitment to innovation, quality, our understanding of end user needs and our relationships with suppliers to deliver these systems.

We believe in creating profitable growth in harmony with environmental sustainability.

## OUR VALUES



Flexibility to serve your needs

We work for and with you to provide customized solutions in order to enhance the end-users experience

Priority to relationship

We assure the quality of our relationship with providers and distributors

The quality of service

We control the quality of our products from creation to delivery

## OUR WORLDWIDE ACTIVITY



SCI-Services is currently selling in more than 34 countries.

In Europe: France, Germany, Italy, England, Switzerland, Belgium, Denmark, Austria, Poland, Portugal, Spain, Etc.

Other countries: China, Emirates, Singapore, Africa, Taiwan, Etc.





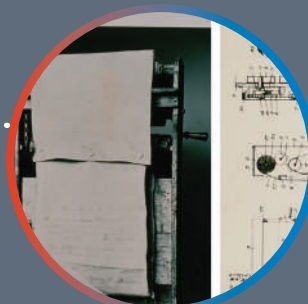
# OUR HISTORY



1889

Our DNA is connected with the birth of Steiner Corporation SA, pioneering in the laundry industry.

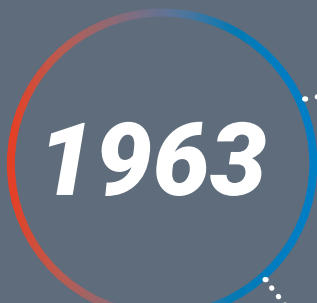
The Steiner family emigrated from Switzerland to the US. George Steiner, age 15, started the textile rental service. He and his brother Frank did their deliveries after school.



1913

We invented first cloth towel dispenser (F8).

The mechanism, unique at the time, provided a clean portion of cloth for the user



1963

Steiner Company International established itself in Europe.



1962

Creation of the F8 cloth towel dispenser. The reliability of its mechanism and the sturdiness of the dispenser guarantee the quality of the product. Success is immediate. In 1962 we reach the number of 1 million dispensers sold.



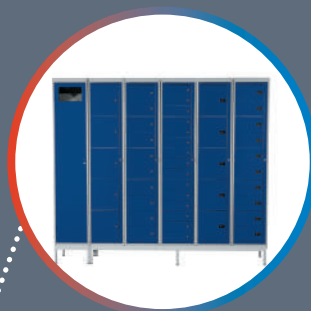
1980

The Visio Soap dispenser created in the eighties is still commercialized today



1997

The visiopaper hand towel dispenser was created with automatic cut (A97). Over two millions users continue to use this dispenser.



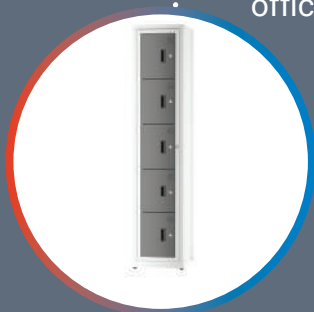
2004

The laundry lockers range grows with the addition of 2 ranges of garment lockers especially for the needs of the industrial, health and agro-alimentary sectors, combining innovation and quality of manufacture.



2016

In 2016, SCI-Services SA officially takes over all commercial activity from Steiner System. The official takeover included all commercial activities, production, trademarks and patents. An international team of highly motivated professionals continues to serve all clients from our Swiss based office



2019

We introduce a new revolutionary laundry lockers concept: The Click-O-Matic®



2020

Since already a few years SCI-Services SA offers a sustainable solution for hygiene dispensers and in 2020 this range is expanded with new, eco friendly products.



Soap dispensers

*Page 8, 9, 15, 17, 20, 23, 29, 33, 36, 37, 39*

Papercut dispensers

*Page 14, 17, 18, 28, 38*

Folded paper towel dispensers

*Page 10, 14, 15, 20, 21, 24, 29, 34*

Center Feed paper towel dispensers

*Page 10, 21, 24, 29*

Toilet paper towel dispensers

*Page 11, 15, 21, 25, 30, 34*

Toilet hygiene dispensers

*Page 12, 16, 22, 26, 32, 34*

Feminine hygiene dispensers

*Page 12, 22, 26, 32*

Fresh air dispensers

*Page 14, 31*

Industrial roll holders

*Page 40*



**Simply ECO<sub>2</sub> Line**



### **110 B Soap dispenser - Cartridge 750 ml**

- > Code: 340405/002
- > Packaging: 1 piece
- > Pallet: 420 pieces
- > WxHxD: 120 x 250 x 100 mm
- > Consumable: Liquid soap SiCC Cartridges 750 ml
  - PINK LIQUID DELUXE - 111411/001
  - WHITE LIQUID DELUXE - 111413/001
  - E6 - CLEANSER - 111416/001
  - INSTANT CLEANSER - 111414/001



### **110 RB Soap dispenser - Refill 750 ml**

- > Code: 340406/002
- > Packaging: 1 piece
- > Pallet: 420 pieces
- > WxHxD: 120 x 250 x 100 mm
- > Consumable: Liquid soap
  - PINK LIQUID DELUXE - 110214/001

### **105 RB Soap dispenser - Refill 350 ml**

- > Code: 340500/001
- > Packaging: 1 piece
- > Pallet: 360 pieces
- > WxHxD: 120 x 185 x 100 mm
- > Consumable: Liquid soap
  - PINK LIQUID DELUXE - 110214/001





**New**

**115 B Soap dispenser manual -  
LIQUID soap SiCC cartridge 750 ml**

- > Code: 340600/001
- > Consumable: Liquid soap SiCC Cartridges 750 ml
  - PINK LIQUID DELUXE - 111411/002
  - WHITE LIQUID DELUXE - 111413/002
  - E6 - CLEANSER - 111416/002
  - INSTANT CLEANSER - 111414/002

**115 B Soap dispenser manual -  
FOAM soap SiCC cartridge 700 ml**

- > Code: 340600/002
- > Consumable: Foam soap SiCC Cartridges 700 ml
  - FOAM CRYSTAL BLUE - 111310/001

**115 RB Soap dispenser manual -  
Refill LIQUID soap 1000 ml**

- > Code: 340600/003
- > Consumable: Liquid soap
  - PINK LIQUID DELUXE - 110214/001

- > Packaging: 1 piece
- > WxHxD: 122 x 345 x 107 mm



**New**

**115 B Soap dispenser sensor -  
LIQUID soap SiCC cartridge 750 ml**

- > Code: 340600/005
- > Consumable: Liquid soap SiCC Cartridges 750 ml
  - PINK LIQUID DELUXE - 111411/002
  - WHITE LIQUID DELUXE - 111413/002
  - E6 - CLEANSER - 111416/002
  - INSTANT CLEANSER - 111414/002

**115 B Soap dispenser sensor -  
FOAM soap SiCC cartridge 700 ml**

- > Code: 340600/006
- > Consumable: Foam soap SiCC Cartridges 700 ml
  - FOAM CRYSTAL BLUE - 111310/001

**115 RB Soap dispenser sensor -  
Refill LIQUID soap 1000 ml**

- > Code: 340600/007
- > Consumable: Liquid soap
  - PINK LIQUID DELUXE - 110214/001

- > Packaging: 1 piece
- > WxHxD: 122 x 290 x 107 mm

### **210 Paper towel dispenser - Multifold or Roll**

- > Code: 341100/001
- > Packaging: 1 piece
- > Pallet: 112 pieces
- > WxHxD: 280 x 255 x 175 mm
- > Consumable: Folded paper or paper roll



**Double function:  
folded paper or paper roll**

### **230 Paper towel dispenser - Multifold**

- > Code: 341200/002
- > Packaging: 1 piece
- > Pallet: 91 pieces
- > WxHxD: 280 x 400 x 140 mm
- > Consumable: Folded paper - 450 towels



### **221 Center feed Paper towel dispenser**

- > Code: 341000/001
  - > Packaging: 1 piece
  - > WxHxD: 230 x 355 x 238 mm
  - > Consumable: Paper roll
- > Possibility to transform for precut paper with special funnel kit 702505/002



**New**

**Suitable for standard or  
precut paper**



#### **Mini Jumbo Toilet paper dispenser**

- > Code: 341500/002
- > Packaging: 1 piece
- > Pallet: 140 pieces
- > WxHxD: 270 x 255 x 120 mm
- > Consumable: Paper roll max. ø 245 mm (core min. Ø 45 mm)

#### **Maxi Jumbo Toilet paper dispenser**

- > Code: 341900/002
- > Packaging: 1 piece
- > Pallet: 78 pieces
- > WxHxD: 375 x 360 x 135 mm
- > Consumable: Paper roll max. ø 340 mm (core min Ø 45 mm)



#### **295 Maxi Bulk Pack Toilet paper dispenser**

- > Code: 342300/002
- > Packaging: 1 piece
- > Pallet: 273 pieces
- > WxHxD: 140 x 320 x 120 mm
- > Consumable: Folded paper. Can hold 2,5 packets

**New**



#### **241 Mono Roll Toilet Paper dispenser**

- > Code: 340300/001
- > Packaging: 2 pieces
- > WxHxD: 140 x 150 x 135 mm
- > Consumable: Toilet roll - Ø max. 130 x 105 mm or folded paper - 1 bulk pack 115x115x120 mm

> *Using a coreless roll you can have 150 meters of paper, same capacity as a regular mini jumbo!*

**Double function:  
folded paper or paper roll**

**265 - Dispenser for toilet seat covers white**

- > Code: 340265/001
- > Packaging: 6 pieces
- > Pallet: 360 pieces
- > WxHxD: 210 x 285 x 60 mm
- > Consumable: Toilet seat covers 998200/002



**New**

**Feminine bag holder 260**

- > Code: 340260/002
- > Packaging: 6 pieces
- > Pallet: 612 pieces
- > WxHxD: 135 x 285 x 45 mm
- > Consumable: Paper hygiene bags



**New**

**Feminine hygiene bag dispenser Natural Bag ref. 285**

- > Code: 340285/001
- > Packaging: 6 pieces
- > Pallet: 2088 pieces
- > WxHxD: 98 x 138 x 36 mm
- > Consumable: Refills bags 971001/005



**New**

**Facial tissue dispenser ref. 275**

- > Code: 340701/001
- > Packaging: 6 pieces
- > Pallet: 546 pieces
- > WxHxD: 260 x 140 x 65 mm



**New**



## INOX Line

High quality and elegant  
dispensers  
Stainless steel AISI 430

**MULTIFUNCTION INOX Dispenser with foam/liquid soap, paper and Fragrance**

**Stainless steel with mirror**

> Code: 291601/002

**MULTIFUNCTION INOX Dispenser with foam/liquid soap, paper and Fragrance**

**Stainless steel without mirror**

> Code: 291601/001

Soap dispenser for liquid or foam soap cartridges.

FOAM CRYSTAL BLUE - 111310/001

PINK LIQUID DELUXE - 111411/002

WHITE LIQUID DELUXE - 111413/002

E6 - CLEANSER - 111416/002

INSTANT CLEANSER - 111414/002

For refill option add 702401/003.

Fragrance diffuser: with batteries

Different setting solutions.

> Consumable: Air freshener refills 191700

BLUE FEELING - 191700/001

BAMBOO FLOWER - 191700/003

TROPIC FRESH - 191700/004

FLORAL LEMON - 191700/005

Folded paper dispenser

> Packaging: 1 unit

> WxHxD: 383 x 455 x 124 mm

**PICO S Hand paper towel roll dispenser with sensor**

**Yoke 34F back plate grey smoky white cover**

**Stainless steel**

> Code: 297930/001

> Packaging: 1 unit

> Pallet: 42 pieces

> WxHxD: 300 x 300 x 203 mm

> Consumable: Paper roll 2 or 3 ply max. Ø200 mm

> Delivered paper size can be regulated with 3 lengths

"automatic" option is available for special service

> Hygienic no touch dispenser

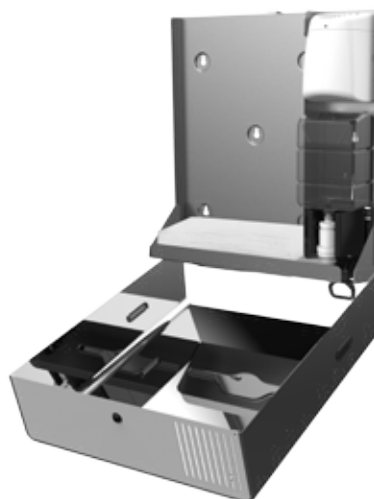
> Fast and easy loading

> Customizable to proprietary captive systems

**New**



**4 functions  
in one dispenser**



**New**







## Refill or SiCC Cardridge



### **110 B Soap dispenser - Cartridge 750 ml**

- > Code: 291201/002
- > Packaging: 1 unit
- > Pallet: 200 pieces
- > WxHxD: 120 x 265 x 120 mm
- > Consumable: Liquid soap SiCC Cartridges 750 ml  
PINK LIQUID DELUXE - 111411/001  
WHITE LIQUID DELUXE - 111413/001  
E6 - CLEANSER - 111416/001  
INSTANT CLEANSER - 111414/001

### **110 RB Soap dispenser - Refill 750 ml**

- > Code: 291202/002
- > Packaging: 1 unit
- > Pallet: 200 pieces
- > WxHxD: 120 x 265 x 120 mm
- > Consumable: Liquid soap  
PINK LIQUID DELUXE - 110214/001

### **MAXI DISPENSER C/V/Z - Folded paper dispenser**

- > Code: 290101/002
- > Packaging: 1 units
- > Pallet: 100 pieces
- > WxHxD: 265 x 365 x 113 mm
- > Contents: folded paper  
Max. dimensions: width 265 mm, depth 105 mm

### **Maxi Jumbo - Stainless steel toilet paper dispenser with hinged cover**

- > Code: 290201/002
- > Packaging: 1 unit
- > Pallet: 100 pieces
- > Dimensions: Ø310 mm D. 120 mm
- > Consumable: Paper roll Ø280 mm - width 100 mm

### **Mini Jumbo - Stainless steel toilet paper dispenser with hinged cover**

- > Code: 290212/002
- > Packaging: 1 unit
- > Pallet: 200 pieces
- > Dimensions: Ø230 mm D. 115 mm
- > Consumable: Paper roll Ø220 mm - width 100 mm

### **Toilet tissue dispenser stainless steel Bulk pack**

- > Code: 291300/002
- > Packaging: 1 unit
- > Pallet: 200 pieces
- > WxHxD: 120 x 245 x 120 mm
- > Consumable: folded paper



**Stainless steel dispenser for toilet seat covers brushed**

- > Code: 998901/002
- > Packaging: 10 units
- > Pallet: 120 pieces
- > WxHxD: 420 x 310 x 70 mm
- > Easy to position close to the toilet bowl
- > Easy maintenance
- > Closing with key
- > Neat seat cover refills 06100/002



**NEAT SEAT toilet sheets - Carton of 2500 pcs.  
Box of 20 x 125 pcs.**

- > Packaging: 1 unit (20 packets of 125 sheets each)
- > Pallet: 60

**Paper Bin 40 lt**

- > Code: 290301/002
- > Packaging: 1 unit
- > Pallet: 25 pieces
- > WxHxD: 310 x 600 x 220 mm
- > Cover to be ordered separately



**Paper bin cover**

- > Code: 290800/001
- > Packaging: 1 unit





## PAPERCUT Dispensers



### Soap dispenser with matching design



#### **STRAIGHT CUT Hand paper towel roll dispenser automatic straight cut**

**back plate grey smoky white cover**

- > Code: 057900/001
- > Packaging: 1 piece
- > Pallet: 48 pieces
- > WxHxD: 309 x 300 x 215 mm
- > Consumable: Paper roll 2 or 3 ply max. Ø200 mm width: 180 - 230 mm
- > Unique and patented "clean cut" system
- > Fast and easy loading
- > HACCP compatible
- > Economical: controlled distribution of paper towel length
- > Customizable to proprietary captive systems

#### **Soap dispenser FOAM soap SiCC cartridge 700 ml**

- > Code: 391300/001
- > Consumable: Foam soap SiCC Cartridges 700 ml  
FOAM CRYSTAL BLUE - 111310/001

#### **Soap dispenser LIQUID soap SiCC cartridge 750 ml**

- > Code: 391300/002
- > Consumable: Liquid soap SiCC Cartridges 750 ml  
PINK LIQUID DELUXE - 111411/002  
WHITE LIQUID DELUXE - 111413/002  
E6 - CLEANSER - 111416/002  
INSTANT CLEANSER - 111414/002

- > Packaging: 1 piece
- > WxHxD: 122 x 345 x 107 mm

**PICO CUT Hand paper towel roll dispenser  
automatic straight cut - Ø155**

- > Code: 057900/001
- > Packaging: 1 piece
- > Pallet: 48 pieces
- > WxHxD: 322 x 330 x 230 mm
- > Consumable: Paper roll 2 or 3 ply max. Ø155 mm
- > Unique and patented "clean cut" system
- > Fast and easy loading HACCP
- > Economical: controlled distribution of paper towel length
- > Customizable to proprietary captive systems



**PICO S Hand paper towel roll dispenser with sensor  
back plate grey smoky white cover**

- > Code: 057930/001
- > Packaging: 1 piece
- > Pallet: 48 pieces
- > WxHxD: 322 x 330 x 230 mm
- > Consumable: Paper roll 2 or 3 ply max. Ø200 mm
- > Delivered paper size can be regulated with 3 lengths
- > "automatic" option is available for special service.
- > Hygienic no touch dispenser
- > Fast and easy loading
- > Economical: controlled distribution of paper towel length
- > Customizable to proprietary captive systems



**SIMPLECUT Hand paper towel roll dispenser  
automatic cut**

- > Code: 059100/001
- > Packaging: 1 piece
- > Pallet: 48 pieces
- > WxHxD: 298 x 347 x 248 mm
- > Consumable: Paper roll 1 ply max. Ø200 mm
- > Fast and easy loading
- > HACCP compatible
- > Economical: controlled distribution of paper towel length
- > Customizable to proprietary captive systems



**Paper towel roll tissue white 100 m, 3 ply 17.5 g,  
height 210mm, core 42mm**

- > Code: 062523/001
- > Packaging: 6 pieces
- > Pallet: 240 pieces
- > Suitable for:  
STRAIGHT CUT 057900/001  
PICO CUT 057900/001  
PICO S 057930/001





**NEW DISPENSER Line**

### **110 B Soap dispenser**

#### **LIQUID soap SiCC cartridge 750 ml**

- > Code: 550750/001
- > Packaging: 1 piece
- > Pallet: 420 pieces
- > WxHxD: 120 x 268 x 109 mm
- > Consumable: Liquid soap SiCC Cartridges 750 ml
  - PINK LIQUID DELUXE - 111411/001
  - WHITE LIQUID DELUXE - 111413/001
  - E6 - CLEANSER - 111416/001
  - INSTANT CLEANSER - 111414/001

### **110 RB Soap dispenser sensor -**

#### **Refill LIQUID soap 750 ml**

- > Code: 550750/001
- > Packaging: 1 piece
- > Pallet: 420 pieces
- > WxHxD: 120 x 268 x 109 mm
- > Consumable: Liquid soap
  - PINK LIQUID DELUXE - 110214/001

### **210 Paper towel dispenser - Multifold or Roll**

- > Code: 550100/001
- > Packaging: 1 piece
- > Pallet: 110 pieces
- > WxHxD: 305 x 242 x 170,5 mm
- > Contents: paper towel rolls or folded paper

### **230 Paper towel dispenser - Multifold**

- > Code: 550200/001
- > Packaging: 1 piece
- > Pallet: 104 pieces
- > WxHxD: 300 x 390 x 134 mm
- > Contents: paper towel. Max. dimensions:
  - width 265 mm, depth 105 mm



**Refill or SiCC Cartridge**



**Double function:  
folded paper or paper roll**





#### **Paper towel dispenser - Multifold Slim**

- > Code: 550800/001
- > Packaging: 1 piece
- > Pallet: 136 pieces
- > WxHxD: 265 x 328 x 98
- > Contents: paper towel. Max. dimensions: width 230 mm, depth 80 mm



#### **Midi Center feed Paper towel dispenser**

- > Code: 550300/001
- > Packaging: 1 piece
- > Pallet: 72 pieces
- > WxHxD: 230 x 355 x 235
- > Contents: paper towel. Max. dimensions: Ø205 mm - height 250 mm
- > Available for standard paper, possibility to transform for precut paper with special funnel kit



#### **252 Maxi Jumbo Toilet paper dispenser**

- > Code: 550600/001
- > Packaging: 1 unit
- > Pallet: 78 pieces
- > WxHxD: 358 x 378 x 142 mm
- > Consumable: Roll max. Ø300 mm - width 100 mm
- > Paper protected from water infiltration



#### **295 Maxi Bulk Pack Toilet paper dispenser**

- > Code: 550400/001
- > Packaging: 1 unit
- > Pallet: 182 pieces
- > WxHxD: 157 x 351 x 142
- > Consumable: Folded paper
- > Hygienic, toilet paper is isolated for perfectly hygienic distribution
- > Practical, easy refilling saves time
- > Can contain up to 2,5 packages

### **265 - Dispenser for toilet seat covers**

- > Code: 322500/002
- > Packaging: 6 pieces
- > Pallet: 360 pieces
- > WxHxD: 210 x 285 x 60
- > Consumable: Refill toilet seat covers 998200/002



### **Refills for toilet seat cover dispenser**

#### **Ref. 265 - 10 x 200 sheets**

- > Code: 998200/002
- > Packaging: 10 pieces
- > Pallet: 500

### **Feminine bag holder 260**

- > Code: 322400/002
- > Packaging: 6 pieces
- > Pallet: 612 pieces
- > WxHxD: 135 x 285 x 45 mm



### **Feminine hygiene bag dispenser**

#### **Natural Bag ref. 285 white**

- > Code: 970700/002

#### **Feminine hygiene bag dispenser**

#### **Natural Bag ref. 285 chrome**

- > Code: 970701/002
- > Packaging: 6 pieces
- > Pallet: 2088 pieces
- > WxHxD: 98 x 138 x 36



### **LADY-BOX 17lt. container for sanitary pads**

- > Code: 999600/002
- > Packaging: 1 piece
- > Pallet: 40 pieces
- > WxHxD: 220 x 560 x 430 mm
- > Lid is activated by a pedal: no need to touch it



### **LADY BOX white waste bags - 71x65 cm**

- > Code: 999603/002
- > Packaging: Box with 750 bags
- > Pallet: 40 pieces

### **Facial tissue dispenser ref. 275**

- > Code: 322701/002
- > Packaging: 6 pieces
- > Pallet: 546 pieces
- > WxHxD: 260 x 140 x 65 mm





## DISPENSER Line

### Refill or SiCC Cardridge



#### **110 B Soap dispenser**

##### **LIQUID soap SiCC cartridge 750 ml**

- > Code: 320405/002
- > Packaging: 6 piece > Pallet: 288 pieces
- > WxHxD: 120 x 250 x 100 mm
- > Consumable: Liquid soap SiCC Cartridges 750 ml
- PINK LIQUID DELUXE - 111411/001
- WHITE LIQUID DELUXE - 111413/001
- E6 - CLEANSER - 111416/001
- INSTANT CLEANSER - 111414/001

#### **110 RB Soap dispenser Refill LIQUID soap 750 ml**

- > Code: 320406/002
- > Packaging: 6 piece > Pallet: 288 pieces
- > WxHxD: 120 x 250 x 100 mm
- > Consumable: Liquid soap
- PINK LIQUID DELUXE - 110214/001

#### **105 RB Soap dispenser Refill LIQUID soap 350 ml**

- > Code: 320106/002
- > Consumable: Liquid soap
- PINK LIQUID DELUXE - 110214/001
- > Packaging: 6 piece > Pallet: 378 pieces
- > WxHxD: 120 x 185 x 100 mm



**210 Paper towel dispenser - Multifold or Roll**

- > Code: 340500/002
- > Packaging: 1 piece
- > Pallet: 112 pieces
- > WxHxD: 280 x 250 x 180
- > Contents: paper towel rolls or folded paper

**225 Mini Paper towel dispenser - Mini Multifold**

- > Code: 321202/001
- > Packaging: 1 piece
- > Pallet: 126 pieces
- > WxHxD: 280 x 260 x 145 mm
- > Contents: folded paper

**230 Paper towel dispenser - Multifold**

- > Code: 321200/002
- > Packaging: 1 pieces
- > Pallet: 60 pieces
- > WxHxD: 280 x 400 x 140 mm
- > Contents: folded paper

**220 Mini Center feed Paper towel dispenser**

- > Code: 321000/002
- > Packaging: 1 piece
- > Pallet: 120 pieces
- > WxHxD: 180 x 315 x 170 mm
- > Contents: paper Max. Ø150 mm - height 240 mm

**222 Maxi Center feed Paper towel dispenser**

- > Code: 321100/002
  - > Packaging: 1 piece
  - > Pallet: 56 pieces
  - > WxHxD: 240 x 340 x 270 mm
  - > Contents: paper Max. Ø240 mm - height 260 mm
- > Available for standard paper, possibility to transform for precut paper with special funnel kit



**Double function:  
folded paper or paper roll**





### **252 Maxi Jumbo Toilet paper dispenser / plain backplate**

- > Code: 321900/002
- > Packaging: 1 piece
- > Pallet: 78 pieces
- > WxHxD: 375 x 360 x 135 mm
- > Contents: paper roll Ø340 mm - width 100 mm

### **240 Mini Jumbo Toilet paper dispenser**

- > Code: 321500/002
- > Packaging: 1 piece
- > Pallet: 140 pieces
- > WxHxD: 270 x 255 x 120 mm
- > Contents: paper roll Ø245 mm - width 100 mm
- > Paper protected from water infiltration



### **290 Mini Bulk Pack Toilet paper dispenser**

- > Code: 322200/002
- > Packaging: 6 pieces
- > Pallet: 288 pieces
- > WxHxD: 140 x 180 x 115 mm



### **295 Maxi Bulk Pack Toilet paper dispenser**

- > Code: 322300/002
- > Packaging: 6 pieces
- > Pallet: 180 pieces
- > WxHxD: 140 x 320 x 115 mm

### **265 - Dispenser for toilet seat covers**

- > Code: 322500/002
- > Packaging: 6 pieces
- > Pallet: 360 pieces
- > WxHxD: 210 x 285 x 60
- > Consumable: Refill toilet seat covers 998200/002



### **Refills for toilet seat cover dispenser**

#### **Ref. 265 - 10 x 200 sheets**

- > Code: 998200/002
- > Packaging: 10 pieces
- > Pallet: 500

### **Feminine bag holder 260**

- > Code: 322400/002
- > Packaging: 6 pieces
- > Pallet: 612 pieces
- > WxHxD: 135 x 285 x 45 mm



### **Feminine hygiene bag dispenser**

#### **Natural Bag ref. 285 white**

- > Code: 970700/002

#### **Feminine hygiene bag dispenser**

#### **Natural Bag ref. 285 chrome**

- > Code: 970701/002
- > Packaging: 6 pieces
- > Pallet: 2088 pieces
- > WxHxD: 98 x 138 x 36



### **LADY-BOX 17lt. container for sanitary pads**

- > Code: 999600/002
- > Packaging: 1 piece
- > Pallet: 40 pieces
- > WxHxD: 220 x 560 x 430 mm
- > Lid is activated by a pedal: no need to touch it

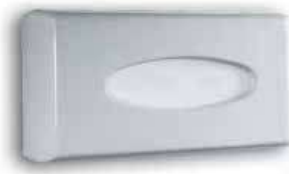


### **LADY BOX white waste bags - 71x65 cm**

- > Code: 999603/002
- > Packaging: Box with 750 bags
- > Pallet: 40 pieces

### **Facial tissue dispenser ref. 275**

- > Code: 322701/002
- > Packaging: 6 pieces
- > Pallet: 546 pieces
- > WxHxD: 260 x 140 x 65 mm





**RICO Line**

**STRAIGHT CUT Hand paper towel roll dispenser**  
**automatic straight cut**

**back plate grey smoky white cover**

- > Code: 057900/001
- > Packaging: 1 piece
- > Pallet: 48 pieces
- > WxHxD: 309 x 300 x 215 mm
- > Consumable: Paper roll 2 or 3 ply max. Ø200 mm width: 180 - 230 mm
- > Unique and patented "clean cut" system
- > Fast and easy loading
- > HACCP compatible
- > Economical: controlled distribution of paper towel length
- > Customizable to proprietary captive systems



**PICO CUT Hand paper towel roll dispenser**  
**automatic straight cut - Ø155**

- > Code: 057900/001
- > Packaging: 1 piece
- > Pallet: 48 pieces
- > WxHxD: 322 x 330 x 230 mm
- > Consumable: Paper roll 2 or 3 ply max. Ø155 mm
- > Unique and patented "clean cut" system
- > Fast and easy loading HACCP
- > Economical: controlled distribution of paper towel length
- > Customizable to proprietary captive systems



**ICO S Hand paper towel roll dispenser with sensor**  
**back plate grey smoky white cover**

- > Code: 057930/001
- > Packaging: 1 piece
- > Pallet: 48 pieces
- > WxHxD: 322 x 330 x 230 mm
- > Consumable: Paper roll 2 or 3 ply max. Ø200 mm
- > Delivered paper size can be regulated with 3 lengths
- > "automatic" option is available for special service.
- > Hygienic no touch dispenser
- > Fast and easy loading
- > Economical: controlled distribution of paper towel length
- > Customizable to proprietary captive systems





#### **LL R Soap dispenser sensor -**

##### **Refill LIQUID soap 1000 ml**

- > Code: 320406/002
- > Packaging: 6 piece
- > Pallet: 336 pieces
- > WxHxD: 133 x 251 x 126 mm
- > Consumable: Liquid soap  
PINK LIQUID DELUXE - 110214/001



#### **230 Paper towel dispenser - Multifold**

- > Code: 390102/005
- > Packaging: 4 pieces
- > Pallet: 100 pieces
- > WxHxD: 287 x 400 x 131 mm
- > Contents: paper towel. Max. dimensions:  
width 265 mm, depth 105 mm



#### **Paper towel dispenser ZM-Fold Slim**

- > Code: 390109/006
- > Packaging: 4 pieces
- > Pallet: 136 pieces
- > WxHxD: 250 x 330 x 110 mm
- > Contents: paper towel

#### **221 Midi Center feed Paper towel dispenser**

- > Code: 390156/006
- > Packaging: 1 piece
- > Pallet: 72 pieces
- > WxHxD: 230 x 355 x 235 mm
- > Contents: paper towel. Max. 205 mm - h. 250 mm

#### **Maxi Center feed Paper towel dispenser**

- > Code: 390106/006 **(available only upon request)**
- > Packaging: 1 piece
- > Pallet: 56 pieces
- > WxHxD: 260 x 375 x 265 mm
- > Contents: paper towel. Max. Ø220 mm - h. 250 mm
- > Available for standard paper, possibility to  
transform for precut paper with special funnel kit

**Mini Jumbo Toilet paper dispenser**

- > Code: 390103/006 (available only upon request)
- > Packaging: 4 pieces
- > Pallet: 144 pieces
- > WxHxD: 271 x 301 x 130
- > Contents: roll Max. Ø220 mm - width 100 mm

**Midi Jumbo Toilet paper dispenser**

- > Code: 390152/006
- > Packaging: 4 pieces
- > Pallet: 112 pieces
- > WxHxD: 310 x 345 x 130
- > Contents: roll Max. Ø280 mm width 100 mm

**Maxi Jumbo Toilet paper dispenser**

- > Code: 390104/006 (available only upon request)
- > Packaging: 4 pieces
- > Pallet: 60 pieces
- > WxHxD: 355 x 398 x 166
- > Contents: roll Max. Ø315 mm - width 130 mm

**241 Mono Roll Toilet Paper dispenser**

- > Code: 390300/002
- > WxHxD: 140 x 150 x 135 mm
- > Consumable: Toilet roll - Ø max. 130 x 105 mm  
or folded paper - 1 bulk pack 115x115x120 mm

> *Using a coreless roll you can have 150 meters of paper, same capacity as a regular mini jumbo!*



**Double function:  
folded paper or paper roll**



#### **AIR - FRESHENER MK2 - Fragrance dispenser**

##### **Timer with battery**

- > Code: 435006/002
- > Packaging: 6 pieces
- > Pallet: 576 pieces
- > WxHxD: 91 x 132 x 96 mm
- > Consumable: Air freshener refills Fresh 6 191700
- > > Provides non-stop 24 hour air freshening
- > 60 days constant diffusion of perfume thanks to the powerful ventilator with timer
- > Diffuses the perfume without spraying
- > Runs with 2xAA batteries (included)



#### **FIFO Fragrance dispenser**

- > Code: 435002/002
- > Packaging: 12 piecesS
- > Pallet: 5616 pieces
- > WxHxD: 180 x 70 x 16
- > Consumable: Fresh 6 refills 191700
- > No motor, no battery
- > Easy to load, nothing to open
- > The new refill pushes the old one
- > Approx. room capacity: 10 m3



#### **191700/001**

##### **Blue Feeling - Air Freshener refill**

#### **191700/003**

##### **Bamboo Flower - Air Freshener refill**

#### **191700/004**

##### **Tropic Fresh - Air Freshener refill**

#### **191700/005**

##### **Floral Lemon - Air Freshener refill**

- > Packaging: 48 pieces
- > Pallet: 7344 pieces

> The efficiency of liquid perfume without the disadvantages: no risk of leakage, easy to transport, hermetically sealed, not bulky.



**265 - Dispenser for toilet seat covers**

- > Code: 322500/002
- > Packaging: 6 pieces
- > Pallet: 360 pieces
- > WxHxD: 210 x 285 x 60
- > Consumable: Refill toilet seat covers 998200/002

**Refills for toilet seat cover dispenser****Ref. 265 - 10 x 200 sheets**

- > Code: 998200/002
- > Packaging: 10 pieces
- > Pallet: 500

**Feminine bag holder 260**

- > Code: 322400/002
- > Packaging: 6 pieces
- > Pallet: 612 pieces
- > WxHxD: 135 x 285 x 45 mm

**Feminine hygiene bag dispenser****Natural Bag ref. 285 white**

- > Code: 970700/002

**Feminine hygiene bag dispenser****Natural Bag ref. 285 chrome**

- > Code: 970701/002
- > Packaging: 6 pieces
- > Pallet: 2088 pieces
- > WxHxD: 98 x 138 x 36

**LADY-BOX 17lt. container for sanitary pads**

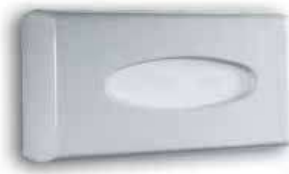
- > Code: 999600/002
- > Packaging: 1 piece
- > Pallet: 40 pieces
- > WxHxD: 220 x 560 x 430 mm
- > Lid is activated by a pedal: no need to touch it

**LADY BOX white waste bags - 71x65 cm**

- > Code: 999603/002
- > Packaging: Box with 750 bags
- > Pallet: 40 pieces

**Facial tissue dispenser ref. 275**

- > Code: 322701/002
- > Packaging: 6 pieces
- > Pallet: 546 pieces
- > WxHxD: 260 x 140 x 65 mm





## METAL Line



### **110 RB Soap dispenser metal**

#### **Refill LIQUID soap 750 ml**

- > Code: 281202/002 (available only upon request)
- > Packaging: 1 piece
- > WxHxD: 120 x 265 x 120 mm
- > Available upon request
- > Consumable: Liquid soap  
PINK LIQUID DELUXE - 110214/001

**230 Paper towel dispenser - Multifold**

- > Code: 282003/002 (available only upon request)
- > Packaging: 1 piece
- > WxHxD: 267 x 400 x 105 mm
- > Contents: folded paper



**JUMBO 280 IR2 - Toilet Paper Dispenser with hinged Cover - white metal**

- > Code: 280209/002 (available only upon request)
- > Packaging: 1 piece
- > Dimensions: Ø310 mm

**JUMBO 220 IR2 - Toilet Paper Dispenser with hinged Cover - white metal**

- > Code: 280219/002 (available only upon request)
- > Packaging: 1 piece
- > Dimensions: Ø230 mm



**White steel dispenser for toilet seat covers**

- > Code: 998900/002
- > Packaging: 10 pieces
- > Pallet: 120 pieces
- > WxHxD: 420 x 310 x 70 mm
- > Easy to position close to the toilet bowl
- > Easy maintenance
- > Closing with key
- > Neat seat cover refills 06100/002

**NEAT SEAT toilet sheets - Carton of 2500 pcs.  
Box of 20 x 125 pcs.**

- > Packaging: 1 piece (20 packets of 125 sheets each)
- > Pallet: 60





## VISIO Line

**SAM 600 ml Soap dispenser - Refill white**

- > Code: 102000/002
- > Packaging: 6 piece
- > Pallet: 540 pieces
- > WxHxD: 80 x 210 x 100 mm
- > Consumable: Liquid soap  
PINK LIQUID DELUXE - 110214/001



**SAM V0 600 ml Soap dispenser - Refill white  
fireproof**

- > Code: 102002/001
- > Packaging: 6 piece
- > Pallet: 540 pieces
- > WxHxD: 80 x 210 x 100 mm
- > Consumable: Liquid soap  
PINK LIQUID DELUXE - 110214/001



**New**

**Fireproof**

**SAM 600 ml Soap dispenser - Refill chromised,  
bucket Macrolon**

- > Code: 102011/002
- > Packaging: 6 piece
- > Pallet: 540 pieces
- > WxHxD: 80 x 210 x 100 mm
- > Consumable: Liquid soap  
PINK LIQUID DELUXE - 110214/001



**AM 800 Refill soap dispenser**

- > Code: 102400/002
- > Packaging: 6 piece
- > Pallet: 432 pieces
- > WxHxD: 123 x 203 x 100 mm
- > Consumable: Liquid soap  
PINK LIQUID DELUXE - 110214/001





**Visiosap B2 Soap dispenser - Refill chromized cover, grey lever**

- > Code: 100201/002
- > Packaging: 6 piece
- > Pallet: 216 pieces
- > WxHxD: 139 x 210 x 109 mm
- > Consumable: Liquid soap  
PINK LIQUID DELUXE - 110214/001



**PRESS BOX - Waste paper compactor, button grey, hinges stainless steel**

- > Code: 056809/002
- > Packaging: 1 piece
- > Pallet: 50 pieces
- > WxHxD: 320 x 405 x 185 mm
- > Consumable: Waste bags 999603/002

**White waste bags - 71x65 cm**

- > Code: 999603/002
- > Packaging: Box with 750 bags
- > Pallet: 40 pieces

**A97 - Hand roll paper dispenser**

- > Code: 0579536/004
- > Packaging: 1 piece
- > Pallet: 42 pieces
- > WxHxD: 322 x 310 x 230
- > Consumable: Paper roll 2 or 3 ply max. Ø200 mm
- > Unique and patented "clean cut" system
- > Fast and easy loading
- > HACCP compatible
- > Economical: controlled distribution of paper towel length



**VISIO 80 Standard F - bucket blue transparent**

- > Code: 11507/002

**VISIO 80 Standard F - bucket grey transparent**

- > Code: 11507/002

- > Packaging: 1 piece
- > Pallet: 20 pieces
- > WxHxD: 415 x 475 x 275 mm
- > Contents: cotton towel roll



**Cotton towel roll 39,5 m White**

- > Code: 020100/002

**Cotton towel roll 39,5 m Blue**

- > Code: 020100/0023

- > Packaging: 6 pieces
- > Pallet: 180 pieces





## INDUSTRIAL Line



### Soap dispenser Macro System blue colour cartridge 3L

- > Code: 991001/002
- > Packaging: 1 piece
- > Pallet: 120 pieces
- > Consumable: MACRO FLUID Industrial soap 991200/002



### MACRO FLUID Industrial soap

Cartridges 3000 ml

- > Code: 991200/002
- > Packaging: 4 pieces
- > Pallet: 144 pieces
- > Suitable for soap dispenser Macro System 991001/002



**345 Industrial roll holder wall or table mount**

- > Code: 999400/002
- > Packaging: 6 pieces
- > Pallet: 168 pieces
- > WxHxD: 420 x 250 x 340 mm
- > Consumable: Paper roll max.  $\varnothing$  340 mm  
width 320 mm, core:  $\varnothing$  70 mm max -  $\varnothing$  45 mm min



**395 Industrial roll holder standing white**

- > Code: 999500/002
- > Packaging: 6 pieces
- > Pallet: 48 pieces
- > WxHxD: 430 x 930 x 455 mm
- > Consumable: Paper roll max.  $\varnothing$  450 mm - width  
320 mm, core:  $\varnothing$  70 mm max -  $\varnothing$  45 mm min



**340 Industrial roll holder wall or table mount chrome**

- > Code: 322801/002
- > Packaging: 1 piece
- > Pallet: 200 pieces
- > WxHxD: 380 x 240 x 320 mm
- > Consumable: Paper roll max.  $\varnothing$  340 mm  
width 320 mm, core:  $\varnothing$  70 mm max -  $\varnothing$  45 mm min



**393 Industrial roll holder standing chrome**

- > Code: 323106/002
- > Packaging: 1 pieces
- > Pallet: 52 pieces
- > WxHxD: 380 x 880 x 520 mm
- > Consumable: Paper roll max.  $\varnothing$  340 mm - width  
320 mm, core:  $\varnothing$  70 mm max -  $\varnothing$  45 mm min



**VARIO BIG - industrial paper roll dispenser**

- > Code: 058403/002
- > Packaging: 1 piece
- > Pallet: 30 pieces
- > WxHxD: 340 x 396 x 330 mm
- > Consumable: Paper roll -  $\varnothing$  max. 280 - 300 mm





### **PINK LIQUID DELUXE hand soap**

Soap SiCC Cartridges 750 ml

> Code: 111411/001 with pump

> Code: 111411/002 without pump

> Packaging: 12 pieces

> Pallet: 756 pieces

> Suitable for soap dispensers models 110 B and 115 B

Soap tank 3000 ml

> Code: 110214/001

> Packaging: 2 pieces

> Pallet: 136 pieces

> Suitable Soap dispensers models 105 RB, 110 RB and 115 RB



### **WHITE LIQUID DELUXE hand soap**

Soap SiCC Cartridges 750 ml

> Code: 111413/001 with pump

> Code: 111413/002 without pump

> Packaging: 12 pieces

> Pallet: 756 pieces

> Suitable for soap dispensers models 110 B and 115 B



### **FOAM CRYSTAL BLUE hand soap**

Foam soap SiCC Cartridges 750 ml

> Code: 111310/001 without pump

> Packaging: 12 pieces

> Pallet: 756 pieces

> Suitable for soap dispensers models 110 B and 115 B with foam pump

## E6 - CLEANSER hand soap

Soap SiCC Cartridges 750 ml

- > Code: 111416/001 with pump
- > Code: 111416/002 without pump
- > Packaging: 12 pieces
- > Pallet: 756 pieces
- > Suitable for soap dispensers models 110 B and 115 B



## INSTANT CLEANSER (to use without water)

SiCC Cartridges 750 ml

- > Code: 111414/001 with pump
- > Code: 11141/002 without pump
- > Packaging: 12 pieces
- > Pallet: 756 pieces
- > Suitable for soap dispensers models 110 B and 115 B



## MACRO FLUID Industrial soap

Cartridges 3000 ml

- > Code: 991200/002
- > Packaging: 4 pieces
- > Pallet: 144 pieces
- > Suitable for soap dispenser Macro System 991001/002



