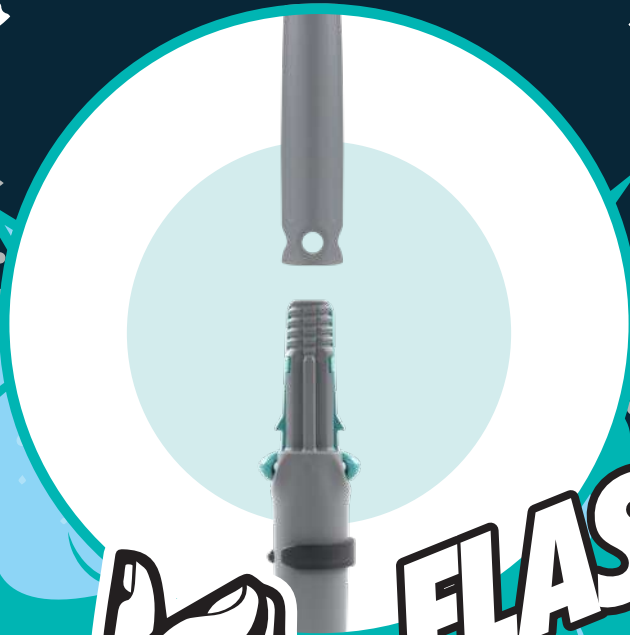




LAMPO  
SYSTEM

*Extraordinary becomes ordinary.*



**FLASH!**





## ATTACHING **TOOLS** QUICKLY

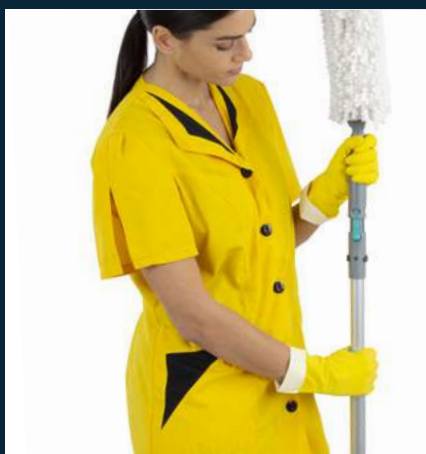
The Jack cone lets you **deal with any need, whether foreseen or unforeseen**: the operator does not have to go back to the storeroom to get the tool required for extraordinary operations, nor even get ladders or stools to reach higher surfaces, as **he always has everything he needs** for any cleaning operation, planned or unplanned.

Jack allows you to quickly switch to high cleaning: the operator can **attach the same handle used with the dusting and washing frames to dusters and web brushes**.

Practical and intuitive, it doubles the possibilities of use thanks to its **handle** and **pole** versions.

### THE ADVANTAGES OF JACK

- **Makes cleaning quicker and easier**, eliminating time wasted
- **It keeps the tool fixed during use**, preventing accidental release
- **Ensures maximum flexibility** when using the equipment



## JACK LAMPO

**Facilitates operations:** minimises work stoppages by avoiding complicated procedures and time wasted.



**Jack Lampo**

code	notes	Ø
00008546	for handles	23 mm
00008547	for poles	21 mm



HANDLES



POLES



## DUSTERS

**Dust surfaces:** attach the handle or pole to the dusters for easy dusting of hard-to-reach surfaces.



**BiLap Twist frame**

code	cm
00008895	54 x 11



**Bendy frame**

code	cm
00008881	40 x 6
00008882	60 x 6



**Bit frame**

code	cm
00008878	40 x 7
00008879	60 x 7



**Buffy**

code	cm
00008880	41

## WEB BRUSHES

**Eliminates spider webs:** attach the handle or pole to the web brush for safe removal of spider webs.



**Lampo curved web brush**

code	notes
00005000E	PET fibre 5,5 cm



**Lampo rounded web brush**

code	notes
00005010E	PET fibre 10 cm

# ***SAFETY***



## ***Extraordinary***

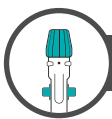
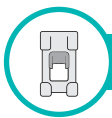
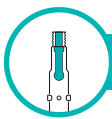
***EASY!***



***WOW***



***Time  
saving!***



# ***CONVENIENCE***



**becomes ordinary**



## NO ACCIDENTS!

Accessing high areas is a true challenge: in order to save time, operators use unsuitable tools to deal with extraordinary cleaning, with the risk of dangerous accidents. Moreover, traditional systems do not ensure safe attachment of the equipment, which could unhook, causing damage and injury.

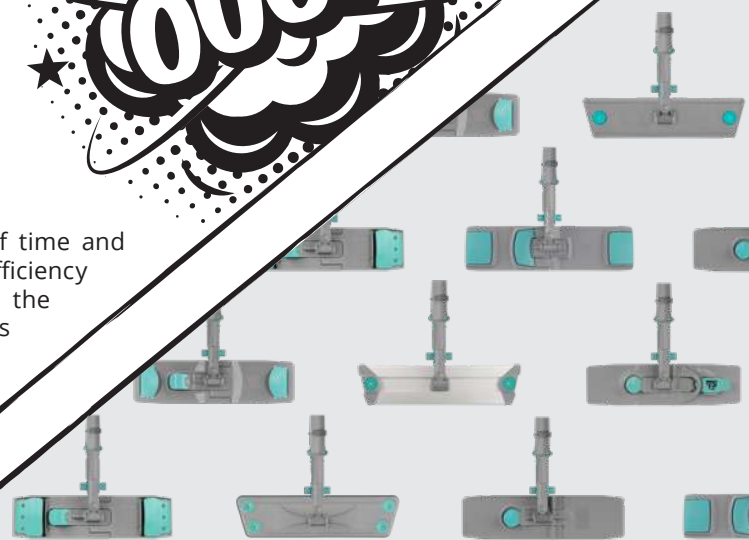
Lampo System allows **quick and easy hooking of dusters and web brushes** to handles or poles, reaching high surfaces, while keeping them **firmly anchored** during use.



## NO COMPLICATIONS!

Connecting handles and poles to the tools is a waste of time and effort, requiring complicated procedures that affect the efficiency of the cleaning service. In addition, emptying a bin in the bag holder without hitting the handles or opening doors and drawers without hitting the frames is not so easy.

The Lampo system allows **the same handle to be used with the whole range of dusters, web brushes and frames**, hooking them up in a flash: this optimises the cleaning process, removing from the trolley unnecessary obstacles that make different activities difficult. The innovative system is **practical, simple and intuitive**: the operator needs no training to learn how to use it.



## NO LIMITS!

Lampo offers a **wide range of tools for cleaning surfaces and floors**: the operator can use the same handle to remove cobwebs with the brushes, dust high surfaces with the dusters and clean floors with the dusting and washing frames, customising the process according to the needs.

In addition, the Jack terminal cone allows **any tool with an Italian thread** to be used, increasing the range of uses offered by the system.

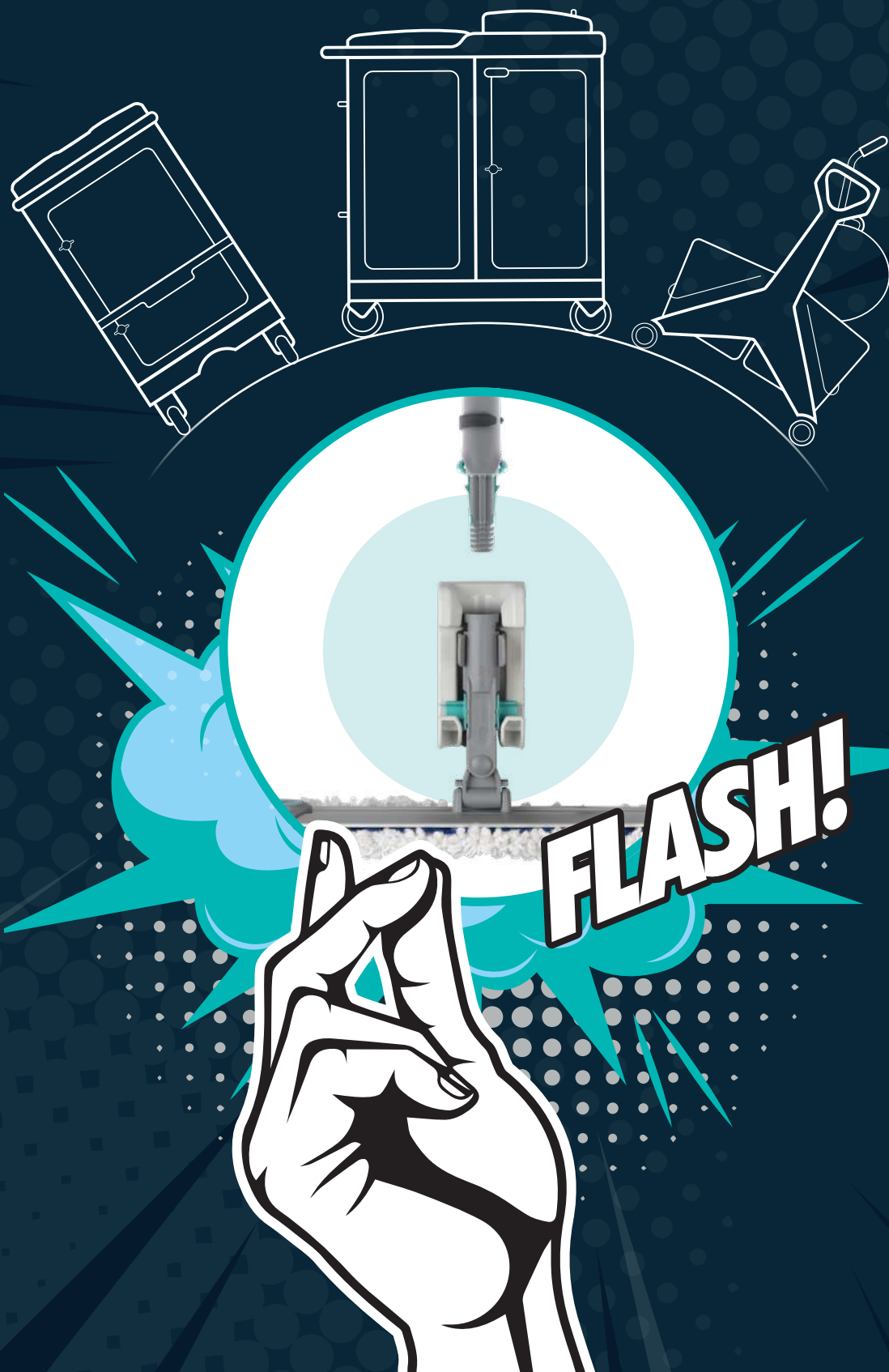


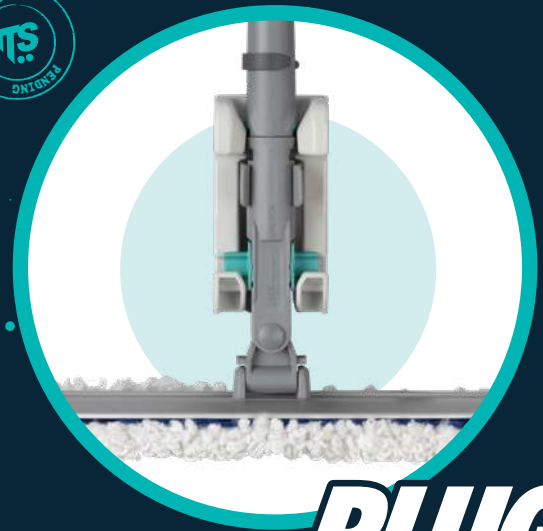
# FLEXIBILITY





*Extraordinary becomes ordinary.*





# PLUG

## HANGS FRAMES WITHOUT CONTACT

Thanks to the Plug device, the extraordinary becomes ordinary: the operator **can place the dusting and washing frames on the trolley** and switch to cleaning high surfaces with manual tools, avoiding direct hand contact with contaminated surfaces.

In addition, he does not have to constantly space out his tools to empty the bins in the bag holder, open the drawers, pull out the tray and access the baskets: the Plug allows **all the frames to be placed in their place while reducing the number of handles**, thus ensuring a trolley free of obstacles that slow down the various activities.

Applied to **Magic** trolleys, it allows you to have all frames available and ready for use without obscuring the operating areas of the trolley. If you also choose **Nickita trolleys with integrated Plug**, you benefit from compact workstations that can be equipped as required with floor dusting and washing systems and manual cleaning tools.

### PLUG ADVANTAGES

- **Eliminates contact with dirt**, ensuring maximum hygiene
- **Eliminate the number of handles** hindering operation of the trolley
- **Allows maximum equipping** of even the most compact trolley



### PLUG LAMPO

**Optimises performance:** maximises the efficiency of your cleaning service by removing obstacles that slow down operations and waste time.



Lampo Plug for Magic panel

code

00003332



Lampo Plug for Magic frame

code

00003334 - sx  
00003333 - dx



### FRAMES

**Meets every need:** provides a wide range of dusting and washing frames for complete cleaning without any compromise.



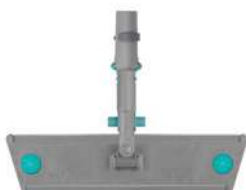
Lamello Lampo

code

cm

00000960YM

40 x 11



Exon Lampo

code

cm

00000889YM

40 x 11



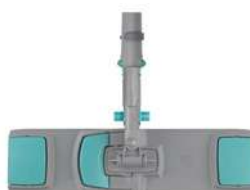
Pockety Lampo

code

cm

00000859EYM

40 x 11



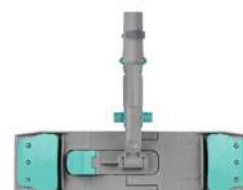
Uni System Lampo

code

cm

00000870YM

40 x 11



Wet System Light Lampo

code

cm

00000868YM

40 x 11



Velook Lampo

code

cm

00000887YM  
00000888YM

40 x 11  
50 x 13



Aluminium Velook Lampo

code

cm

00000991YM  
00000992YM

40 x 9,5  
60 x 9,5



Blik Lampo

code

cm

00000877YM  
00000876YM

40 x 11  
50 x 13



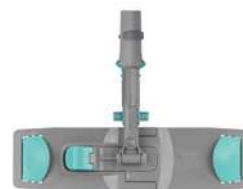
Wet Disinfection Lampo

code

cm

00000862YM  
00000861YM

40 x 11  
50 x 13



WDS Lampo

code

cm

00000846YM  
00000845YM

40 x 11  
50 x 13

### TROLLEYS

**Double the chances:** apply Plug to Magic trolleys to increase efficiency and choose Nickita trolleys with integrated Plug to make the most of a complete cleaning station.



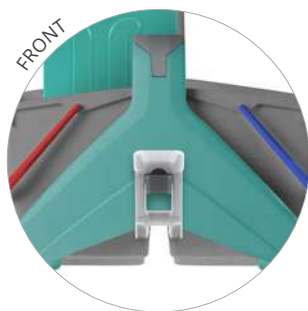
Nikita Tec Lampo (1 plug) with basin to hold tools

code

L

00006262VE

15 + 15



code

L

00006261VE

25 + 25



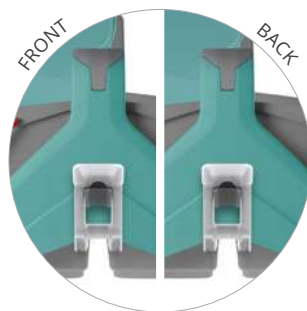
Nikita Dry Lampo (2 plugs)

code

L

00066362VE

15 + 15



code

L

00066361VE

25 + 25





**LAMPO**  
SYSTEM

***Extraordinary becomes ordinary***

## NOTES



Sede centrale - Headquarters

## TTS Cleaning S.R.L.

Viale dell'Artigianato, 12-14  
35010 - Santa Giustina in Colle (PD)  
Tel: +39 049 93 00 710 | Fax: +39 049 93 00 720  
E-mail: info@ttsystem.com | Web: www.ttsystem.com



[www.ttsystem.com](http://www.ttsystem.com)

### TECNO TROLLEY SYSTEM ESPAÑA S.L.U.

C/de Galileu Galilei, 15  
Pol. Ind. Coll de la Manyà  
08403 - Granollers (Barcelona)  
Tel: +34 93 861 6840 | Fax: +34 93 861 8437  
E-mail: ventas@ttsystem.com | Web: www.ttsystem.es

### TECNO TROLLEY SYSTEM DO BRASIL LTDA

Av. Presidente Kennedy, 200  
Portão Vermelho - CEP 06730-000  
Vargem Grande Paulista - SP - Brasil  
Tel: + 55 11 4612-0722 / 4158-9990 | Fax: + 55 11 4612-0031  
E-mail: vendas@ttsbrasil.com.br | Web: www.ttsbrasil.com.br

### TTS CLEANING UK LTD

20 Fitzroy Square, Fitzrovia  
London - United Kingdom  
W1T 6EJ  
Toll free number: 0800 285 1793  
E-mail: uksales@ttsystem.com | Web: www.ttsystem.co.uk

### TTS DE GmbH

Brienner Strasse 55  
80333 - München  
Fax: +49 (0) 2643 900 711  
E-mail: vertrieb@ttsystem.com | Web: www.ttsystem.com

Distributore - Distributor

