

stone care

operation area

- Procedure:** Coating / care
- Surfaces:** all absorbent stone floors such as terrazzo, cotto, marble etc.
- A notice:** Not suitable for unsealed wood and cork surfaces as well as factory-made PUR-coated coverings.



Item No. g0640 canister 10 L

load level



pH=8

in the concentrate

Characteristics

§ A self-shining, highly durable protective film protects the natural properties and appearance of the

Coverings § Very high water resistance

§ Low-foaming - to avoid disturbances during the counteract film formation

Advantages

§ Particular suitability for highly absorbent stone floors in the Aisle and entrance areas as the product is highly water resistant

sustainability and ecology

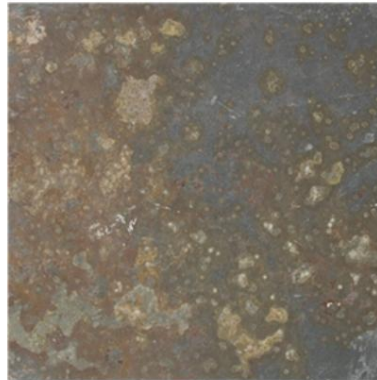
Sustainability characterizes everything we think and do, as evidenced by the ISO 14001 and EMAS certifications, among other things. In the product life cycle, too, we pay attention to the careful use of the environment and resources: from the selection of raw materials to production and delivery to the automatic removal of the empty hollu containers and recycling. The hollu containers, consisting of PE and cardboard, can also be disposed of at the appropriate waste collection points when they are completely empty. We support our customers in the long term with training courses, cleaning plans and innovative dosing technology.

application



Prerequisite: Thoroughly cleaned, neutralized and dry floor covering (free of surfactants). Allow underfloor heating to cool down in good time / close windows.

Perform coating: Apply thinly and evenly, preferably with hollu Met Wiedel. Further applications are only possible after complete drying (approx. 20 - 30 minutes). For new coatings apply 1-2 times. The protective film can be fully loaded after 1-2 days. Wipe new coatings with a damp cloth for approx. 1 week using only clear water.



dosage

undiluted

Range

Approx. 20-35 m² can be coated with 1 L of coating.
Depending on the absorbency of the covering.

Compatible system products



55821 - Mead weasel, without stem; 55822 - Met Strip, cover; suitable handles: item no. 56966, 56967, 56968 or 56969)

storage notice

The product can be stored in the temperature range from 4 °C to +40 °C. Shelf life: 2 years. Operated containers: For the storage of product residues, it is advisable to fill them into smaller containers so that as little air as possible is trapped in the container.

The text of this product information corresponds to the current status of our technical knowledge and experience and is intended to advise you to the best of our knowledge and belief. However, due to the variety of working methods, material properties and application, it is not a legally binding guarantee of specific properties.

www.hollu.com

hollu Systemhygiene GmbH A-6170

Zirl | Salzstrasse 6 | Phone +43 5238 52800 | Fax -990 | Email: info@hollu.com ©

hollu Systemhygiene GmbH | Product sheet | 04/2019 Errors, typographical and printing errors, as well as changes reserved.

so geht sauber. 